



**THE
JOINT INTEGRATED ANALYSIS TOOL
(JIAT)
MAKING DATA SHARING EASIER**



**ICEAA - NEW ORLEANS, LA
18 - 21 JUNE, 2013**



The JIAT Solution

Joint Integrated Analysis Tool (JIAT) provides a common platform to access, store, and share data to support cost analysis.

One – Stop – Shop Data Sharing Resource

- Brings Data to the Analyst via a CAC enabled web-based application
- Sponsored by ODASA-CE: provides access to other agencies for free
- Administrated by ODASA-CE and Tecolote Research
- Available to government analysts only

Databases

- Access to query 9 government cost databases

Libraries

- CER and Factor Libraries
- Web Link Libraries
- Document Library

Models

- Run What-ifs in existing cost models



Benefits of Sharing Data

➤ **What do organizations get out of sharing data?**

- Increased research speed and accuracy
- Save funding dollars by eliminating redundant studies
- Increased depth of study



➤ **JIAT provides a location where all services and agencies can share their data**

- Example of some Missile data available on JIAT today
 - Tri-Service ACDB Missile Database
 - ODASA-CE sponsored Missile Blue Book CERs
- **Does your organization have data, CERs or models they can contribute?**

Benefits of Sharing Data via Web Solutions

➤ **Controlled and secure sharing of data**

➤ CAC Enabled Log ins

- Reduce the burden on the user to memorize login formats and passwords
- Allow for tracking of how data is consumed

➤ Encrypted storage and transfer

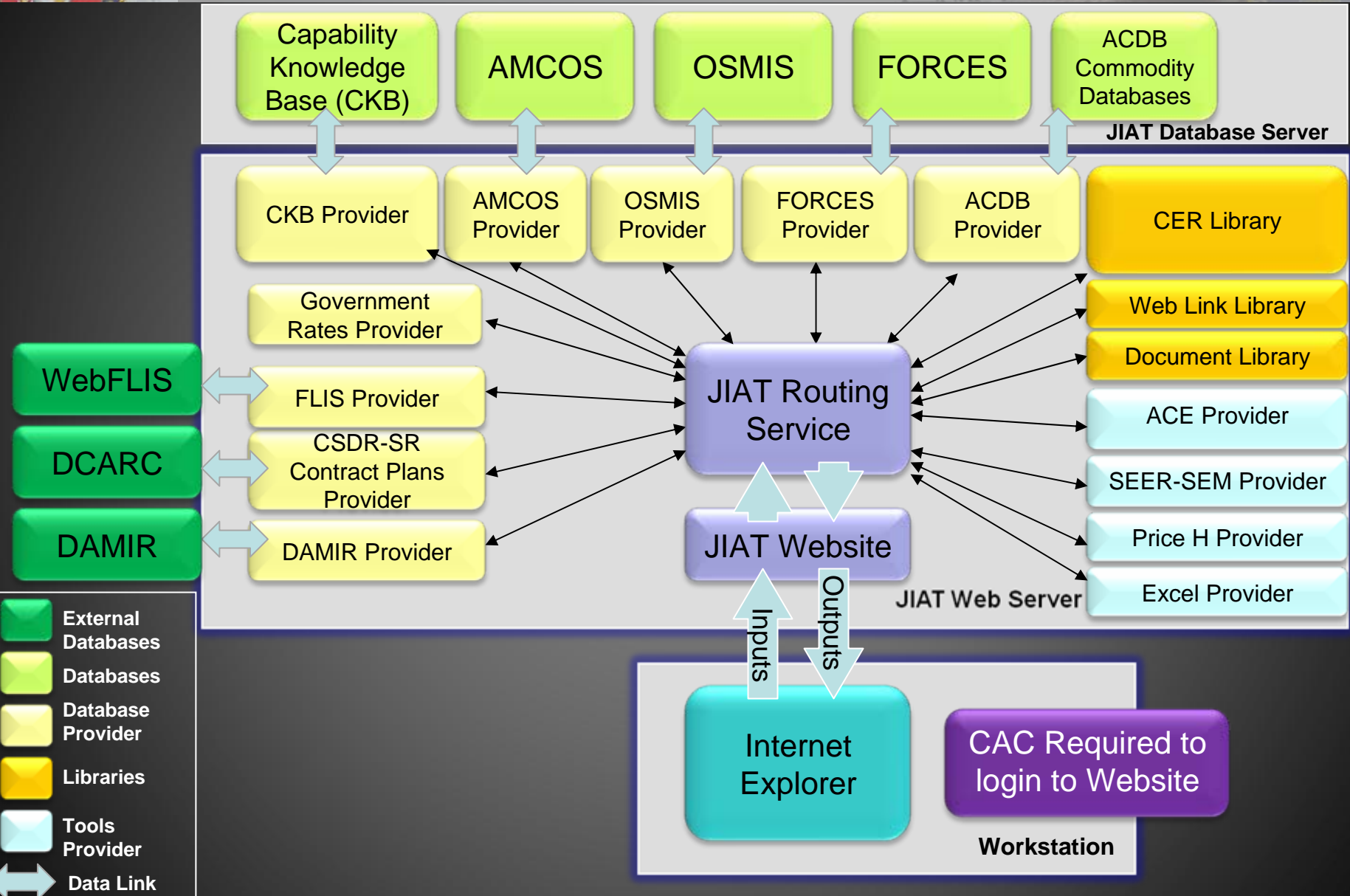
➤ **Multiple levels of sharing information**

- Permissions set by user group assignment to access various content
- Private areas can be created for small group or individual use
- Users must have permission to publish content





JIAT 2.4 Components



Connecting to JIAT

- JIAT Web Browser
- Connect via the AWPS portal
- <https://www.awps.army.mil/>

Main Menu



Begin JIAT work with creating a new JIAT session

JIAT sessions store your JIAT queries and model What-ifs

JIAT - Joint Integrated Analysis Tool User:!

Home Session ▾ CER Libraries ▾ Link Libraries ▾ Documents Library Multiple Run ▾ Model Sequence ▾ Manage Content Maintenance ▾ Help ▾ Log Off

JIAT

JIAT News

JIAT 2.3.9 Released
JIAT Version 2.3.9 was released 16 January 2013.

New Dashboard now a part of JIAT. Look to the main page for the latest information!

Training Events

TRAC Class 22-23 January
A JIAT training class was recently held 22-23 January at the TRADOC Analysis Center for TRAC-WSMR White Sands Missile Range, NM. Thank you to all those who participated in this event.

If your organization is interested in a JIAT training course, please contact Melissa Cyrulik at mcyrulik@tecolote.com. ODASE-CE requires a minimum of eight students to attend a class for sponsorship.

JIAT Brown Bags

ODASA-CE Brown Bag 15 January
The third JIAT brown bag presentation in the ODASA-CE series was conducted 15 January at Fort Belvoir. The session focused on incorporating labor rate data into a manpower estimate. Specifically, attendees learned how to pull labor rates for the AMCOS and Government Rates JIAT Providers and then how to incorporate the data into an ACE manpower estimate.

The February brown bag session is scheduled for 12 February. Analysts from outside of ODASA-CE are welcome to attend brown bag sessions. Please contact Niatika Griffin at

Improving Performance

Do you have difficulties running data queries? If you are using Internet Explorer 9, the Compatibility Settings must be specified when running JIAT. In the Internet browser, click Tools>Compatibility View Settings. Add "army.mil" to the compatibility view. Uncheck all three compatibility options at the bottom of the dialog. Close all browser windows and reopen JIAT.

Have you noticed an unnecessary number of pop-up dialogs when running a JIAT session? Whether

Library Updates

New C4ISR CER Library
ODASA-CE has posted a new CER library containing communication and electronics CERs. The library contains numerous documented CERs and factors.

Quick Start

User Guides
The JIAT User Guide and Quick Start Guide are great tools to learn about JIAT. Both guides are located under the [Help](#) menu.

The Quick Start Guide is designed to help you quickly begin to work with JIAT, while the full User Guide provides a more detailed description of how to operate the features of JIAT.

For further support, contact the JIAT help desk at

Common Browser allows for Plug and Play Providers

- Database queries and model running from the Browser
- The database provider data (e.g. DAMIR and AMCOS) is brought in with a common format
- Common Format includes:
 - Sheet Header Information: displays Provider, Model and description of data
 - Query Inputs: lists all inputs to the query
 - Query Results: displays resulting data after query is executed

JIAT Session - Session39

Save Save As Copy Delete Rename New Copy Manage Export to Excel Export to COSTAT Goto Row Run Query Costs: Then Year Cost Units: \$M Session Description Provider Description Model Definition Documentation

Model (Data Query): Cost and Funding Summary
Description: This model provides a summary of Cost and Funding POM and DAES/Web Services program data
Provider: DAMIR Provider (1.0)

Query Inputs			Query Results
	Name	Value	
1	Service	Army	Select Run Query to produce output results.
2	Program	148 - PATRIOT PAC-3	
3	Data Source	POM - 2013	
4	Subprogram	MISSILE SEGMENT	
5	Start Year	1983	
6	End Year	1983	

Data Query Sheet



Readily Sharable Content Summary

Content to Share

CERs

Individual CERs, Factors, and Data Standards

CER studies

Web Links

Databases

Highly Structured/Established Databases

Home grown smaller Access-like Databases

Models

ACE

Excel

Workbooks

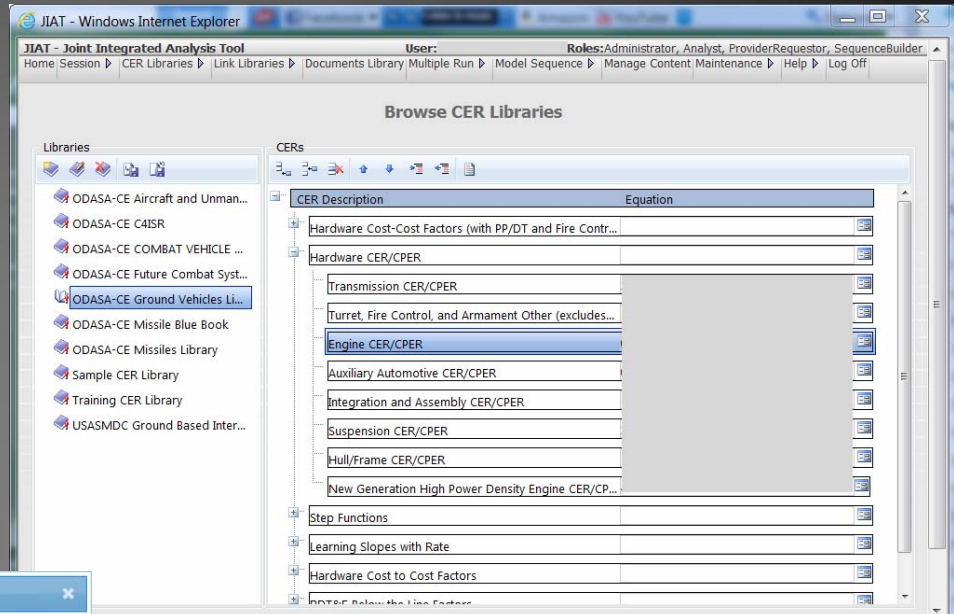
Macro Enabled

SEER SEM

Price H

Sharing a CER via JIAT

- To Share a CER in JIAT
 - First, obtain permission to load CERs to a specific Library
 - Then, upload the CER equation, its properties and documentation
 - Finally, assign a subject and category keywords to allow for library searches



CER Details

Title: Engine CER/CPER

Equation: * Torque ^

Reference Cost: UC100 Learning Slope: Fee Included: No

Theory: Rate Slope: G&A Included: No

Fiscal Year: 2003 Units: \$K - Thousands Overhead Included: Yes

Domain Type: Cost Commodity: Wheeled and Tracked Vehicles

Phase: Production

Keywords: Engine

Buttons: Save, Cancel

CER Definition - Engine CER/CPER

HARDWARE CER/CPER: Engine

DESCRIPTION: This Hardware CER/CPER relates the cost of the individual hardware WBS elements to relevant technical and performance characteristics. Engine Cost for the 100th Unit is * Torque ^ BY 2003 \$K including overhead.

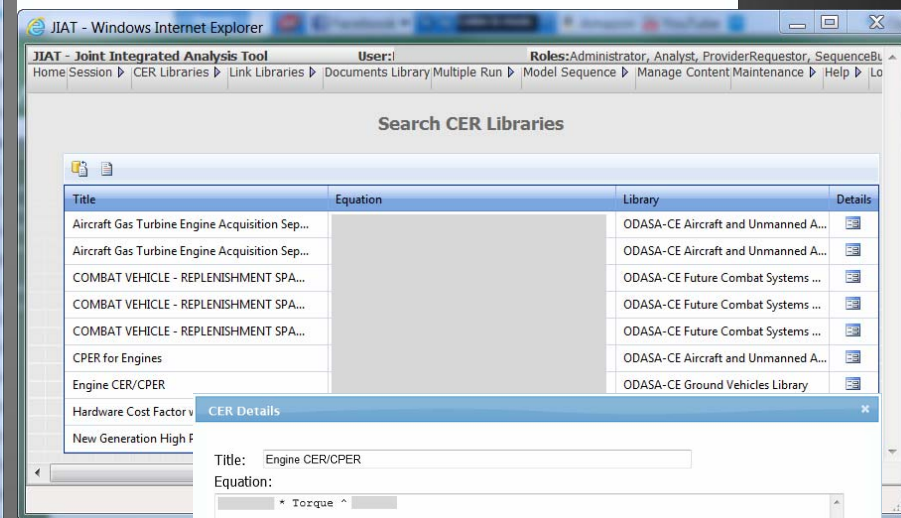
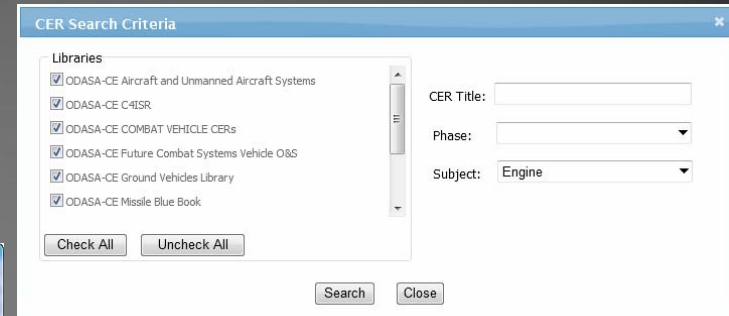
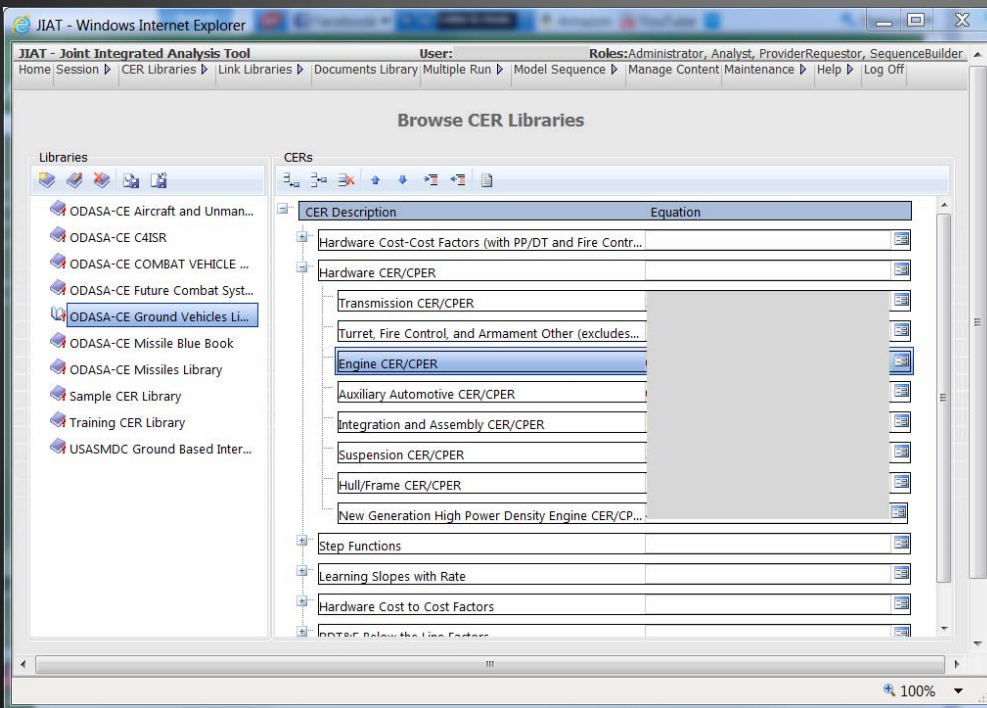
SOURCE DATA: The primary data source for this study is the Wheeled and Tracked Vehicle Data Base (WTVDB). CO\$TAT was used to develop the CPER. The most difficult part of performing this analysis was assembling the data set. Combat Engine cost, performance, and technical data was available for the 11 engines (engine followed by System)^{1,2} :

Buttons: Download, Upload, Delete, Close



Working with JIAT Hosted CERs

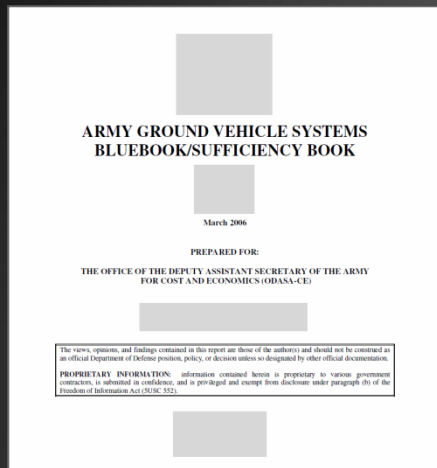
- Once a CER, Factor or Data Point is in JIAT users can
 - Browse CER libraries
 - Search libraries by keyword



- Export the CERs to Excel or ACE



Sharing CER Studies with JIAT



- CER Studies can be hosted as CER Libraries
- One Step upload of ACEIT Librarian Methodology Libraries in JIAT
- Set keywords to enable JIAT search features
- Full study documents can be posted to new JIAT Document Library feature starting Sep 2013

Leading by Example

- ODASA-CE is currently sharing over 725 documented CERs from their sponsored studies via the JIAT CER Libraries for all their major commodities

JIAT - Joint Integrated Analysis Tool

User: MELISSA.ANN.CYRULIK Roles: Administrator, Analyst, ProviderRequestor, SequenceBuil

Home Session | CER Libraries | Link Libraries | Documents Library | Multiple Run | Model Sequence | Manage Content | Maintenance | Help | Log Off

Browse CER Libraries

Libraries

- ODASA-CE Aircraft and Unman...
- ODASA-CE C4ISR
- ODASA-CE COMBAT VEHICLE ...
- ODASA-CE Future Combat Syst...
- ODASA-CE Ground Vehicles Li...
- ODASA-CE Missile Blue Book
- ODASA-CE Missiles Library
- Sample CER Library
- Training CER Library
- USASMD C Ground Based Inter...

CERs

CER Description	Equation
Aircraft Development Engineering CERs June 2001	
Rotary Wing Aircraft Development Engineering CER No...	
UAV System Acquisition CER Methodology & Database...	
Rotary Wing Aircraft Developing Engineering CER Sept...	
UAV Research Payload and Command & Control CPER...	
Airborne IR Sensor/LADAR Cost Model II TR 06-01-03, ...	
Methodology (May 2007) Army Aircraft Definition CER	
Rotary Wing Aircraft DLR CER Sept 2000	
Aircraft Gas Turbine Engine Acquisition Sept 1997	$4.536 \times 10^{-4} \times X^{1.919}$
Aircraft Gas Turbine Engine Acquisition September 1997	$16469.32 \times X^{1.975}$

100%

Sharing a Web Link in JIAT

- Host website link libraries to assist users with finding relevant and verified information sources on the web
- Web libraries can be browsed or searched via keywords
- Two libraries included plus you can build your own organizational libraries
- ✓ General Cost Estimating Sites
 - Provides links to cost estimating resources
- ✓ US Missile System Information
 - Provides information on over 35 different missile systems searchable by system characteristics

Sharing Established Databases via JIAT

- **JIAT integrates data sources and allows users to query 8 government cost estimating databases from a single location**
 - Database wrappers push the database content through a common interface making it easier for novice analysts to be exposed to the data source
 - ODASA-CE currently hosts its major databases including ACDB, AMCOS, CKB, FORCES, and OSMIS via JIAT
 - JIAT expanded beyond Army only databases to include DAMIR, CSDR-SR Submission Plans, and webFLIS
 - Additional databases can be integrated into the open framework with relatively minimal effort



Working with Established Databases in JIAT

➤ 1. Select Database source from a list of available Providers

Create a New Session
Please select a provider to search and enter any relevant search criteria.

Providers to be Searched

- ACDB Demo Provider
- ACDB Import Tester
- ACDB Import Testing (extra spaces)
- ACDB Testing Provider
- ACE Model Provider For Training
- ACE Provider
- AMCOS Provider
- Army ACE Provider
- Army Rotary Wing Aircraft
- CER Runner Provider
- CVA Provider

Search By

Model Name:

Model Description:

Phase:

Subject:

Commodity:

Domain Type:

Next

➤ 2. Select a database query type

Create a New Session
Please select a model and click Next or Finish (depending on model type).

Model Name	Provider
Cost By CES	Army Rotary Wing Aircraft
Cost By WBS	Army Rotary Wing Aircraft
Single Task Cost and Technical Data	Army Rotary Wing Aircraft
Technical Data	Army Rotary Wing Aircraft
Keyword Cost and Technical Data	Army Rotary Wing Aircraft
Database Summary Model	Army Rotary Wing Aircraft

Previous **Finish**

➤ 4. Run Query and View Results

➤ 3. Select query inputs

Data Query Inputs

	Name	Value
1	WBS*	USACEAC AIRCRAFT TEMPLATE (MIL-STD-883C)
2	Resource*	Total
3	Source Document*	CDSR (1921)
4	System Type	ATTACK
5	System Name	AH-64
6	Model	AH-64D LONGBOW
7	Contract Number	
8	Task	
9	Contractor	
10	Life Cycle Phase	FRP

*Required 14 Records **Run Query** **Cancel**

JIAT Session - Windows Internet Explorer

JIAT - Joint Integrated Analysis Tool User: Administrator, Analyst, ProviderRequestor, SequenceBuilder

Home Session > CER Libraries > Link Libraries > Documents Library Multiple Run > Model Sequence > Manage Content Maintenance > Help > Log Off

JIAT Session - Session4

Save Copy Sheet Manage Copy Costs: Base Year 2011 Session Description
 Save As Delete Export to Excel Goto Row Cost Units: \$K Provider Description
 New Rename Export to COSTAT Run Query Model Definition

Model (Data Query): Cost By WBS
 Description: Comparable to the ACDB Report Wizard "Select Entire WBS and One Resource"
 Provider: Army Rotary Wing Aircraft (DEC 2012 - proprietary data)

Query Inputs		Name	Task 1	Task 2	Task 3
1	WBS	USACEAC AIRCRAFT TEMPLATE ...	ATTACK	ATTACK	ATTACK
2	Resource	Total	AH-64	AH-64	AH-64
3	Source Document	CDSR (1921)	AH-64D LONGBOW	AH-64D LONGBOW	AH-64D LONGBOW
4	System Type	ATTACK	Contract Number DAAJ09-95-C-A001	DAAJ09-95-C-A001	DAAJ09-95-C-A001
5	System Name	AH-64	Task AH-64D LONGBOW L(AH-64D LONGBOW	L(AH-64D LONGBOW L(AH-64D LONGBOW	L(AH-64D LONGBOW
6	Model	AH-64D LONGBOW	Contractor BOEING	BELL HELICOPTER	TEBELL HELICOPTER
7	Contract Number	Life Cycle Phase	FRP	FRP	FRP
8	Task	Source Document	CDSR (1921)	CDSR (1921)	CDSR (1921)
9	Contractor	Report By	Prime/Associate	Prime/Associate	Prime/Associate
10	Life Cycle Phase	LRE Date	12/23/1999	12/23/1999	12/23/1999
11		Inflation Index	05/13/2011	05/13/2011	05/13/2011
12		Total % Spent (ACW)			
13		System Buy Quantity			
14		System First Unit			
15		System Last Unit			
16		Resource	TOT : TOTAL, TOTATOT : TOTAL, TOTATOT : TOTAL, TOT		
17		1 AIRCRAFT SYS			
18		1.1 AIR VEHIC			
19		1.1.1 AIRFR			

Data Query Sheet



Sharing Home Grown Databases in JIAT

- JIAT provides a mechanism to share desktop/Access like databases and tables via a website
 - Example – (Comptroller) Military Personnel Composite Standard Pay and Reimbursement Rates (Tab k) – Rates for Army, Air Force, Navy, Marine Corps
 - Database wrappers can be added to JIAT to host new databases with minimal effort

**MILITARY COMPOSITE STANDARD PAY AND REIMBURSEMENT RATES
DEPARTMENT OF THE ARMY
FOR FISCAL YEAR 2012 ¹⁾**

MILITARY PAY GRADE	AVERAGE BASIC PAY	ANNUAL DOD COMPOSITE RATE ²⁾	ANNUAL RATE BILLABLE TO OTHER FEDERAL AGENCIES ^{3,4)}
O-10			
O-9			
O-8			
O-7			
O-6			
O-5			
O-4			
O-3			
O-2			
O-1			
WO-5			
WO-4			
WO-3			
WO-2			
WO-1			
E-9			
E-8			
E-7			
E-6			
E-5			
E-4			
E-3			
E-2			
E-1			
CADETS			

Notes:

- 1) Effective fiscal year 2005, military personnel services for Foreign Military Sales (FMS) shall be priced using the Composite Rates that already include permanent change of station (PCS) expense and shall no longer use the actual PCS expense for PCS moves to support a FMS case. Effective FY 2006, the military personnel services for FMS shall be priced using the DoD Composite Rate plus the acceleration factor shown in Tab K-1. Reimbursement of the acceleration factor shall be deposited into the Defense Health Program (970130). Reimbursement of the per capita normal cost for Medicare-eligible retiree health care (MERHC) accrual shall be deposited into the Miscellaneous Receipts Account 3041. The next update of the DoD FMR Vol. 15 Section 070203 will reflect these changes.
- 2) The annual DoD composite rate includes the following military personnel appropriation costs: average basic pay plus retired pay accrual, Medicare-eligible retiree health care (MERHC) accrual, basic allowance for housing, basic allowance for subsistence, incentive and special pay, permanent change of station expenses, and miscellaneous pay. **Includes** a per capita normal cost of \$5,580 for MERHC accrual – **see Tab K-1**.
- 3) The annual rate billable to Other Federal Agencies recovers additional military related health care costs financed by the Defense Health Program. The annual billable rate includes an acceleration factor of \$10,791 for all personnel. **Excludes** per capita normal cost of \$5,580 for MERHC accrual – **see Tab K-1**.
- 4) To compute a Daily Rate, apply a factor of .00439. To compute an Hourly Rate, apply a factor of .0055.
- 5) Basic pay for these officers is limited to the rate of basic pay for Level II of the Executive Schedule, which currently is \$179,700 per year.

JIAT Session - Windows Internet Explorer

JIAT - Joint Integrated Analysis Tool User: Roles: Administrator, Analyst, ProviderRequestor, SequenceBuilder

Home | Session | CER Libraries | Link Libraries | Documents Library | Multiple Run | Model Sequence | Manage Content | Maintenance | Help | Log Off

JIAT Session - Session4

Save, Save As, Copy Sheet, Copy, Copy to Excel, Goto Row, Run Query, Session Description, Provider Description, Model Definition

Costs: Base Year 2013, Cost Units: \$

Model (Data Query): Military Composite Rates Model
 Description: This model displays Military Composite Rates by Service (as of 4/9/2012)
 Provider: Government Rates Provider

Query Inputs		Query Results				
Name	Value	APPN	Military Pay Grade	Average Basic Pay	Annual DOD Composite Rate	Annual Rate Billable to Other Federal Agencies
1	Service	Army	MPA	E-1		
2	Pay Grade	Enlisted/Officer	MPA	E-2		
3			MPA	E-3		
4			MPA	E-4		
5			MPA	E-5		
6			MPA	E-6		
7			MPA	E-7		
8			MPA	E-8		
9			MPA	E-9		
10			MPA	O-1		
11			MPA	O-2		
12			MPA	O-3		
13			MPA	O-4		
14			MPA	O-5		
15			MPA	O-6		
16			MPA	O-7		
17			MPA	O-8		
18			MPA	O-9		
19			MPA	O-10		

Data Query Sheet

Pages 1



Using Database Results from JIAT

- JIAT data queries can export data to Excel and CO\$TAT dataset worksheets (shown below)

- Use CO\$TAT to analyze a dataset to calculate a factor, regress a CER or develop a learning curve

JIAT Session - Session1

Save Save As Copy Sheet Delete Rename Manage Export to Excel Export to COSTAT Copy Goto Row Run Query

Costs: Base Year 2011 Cost Units: SK Session Description Provider Description Model Definition

Model (Data Query): Cost By CES
 Description: Comparable to the ACDB Report Wizard "Select WBS Elements and Associated Resources" with 3 predetermined items: First, all CES elements must be retrieved; second, select "Total System" on the WBS Items form; third, resource is Total, Total Dollars (Total)
 Provider: Army Rotary Wing Aircraft (NOV 2011)

Query Inputs		Query Res				
Name	Value	Name	Task 1	Task 2	Task 3	Task 4
1 WBS	USACEAC AIRCRAFT TEMPLATE...	System Type	ATTACK	ATTACK	ATTACK	ATTACK
2 Source Document	CDSR (1921)	System	AH-64			
3 System Type	ATTACK	Model				
4 System Name	AH-64	Contract Number				
5 Model		Task				
6 Contract Number		Contractor				
7 Task		Life Cycle Phase				
8 Contractor		Source Document				
9 Life Cycle Phase		Report By				
10		LRE Date				
11		Inflation Index				
12		Total % Spent (ACWP/LRE)				
13		System Buy Quantity				
14		System First Unit				
15						

Home Insert Page Layout Formulas Data Review View Add-Ins COSTAT

Criteria Prediction Intervals Report Styles Dataset Analysis

Linear Learning Update Report Examples About Log Linear Beta Clear Report Help Close Non Linear Univariate Copy To Clipboard Rules of Thumb

C19

Variables	Variable ID	Task 1	Task 2	Task 3	Task 4
3					
4 System Type		ATTACK	ATTACK	ATTACK	ATTACK
5 System		AH-64			
6 Model					
7 Contract Number					
8 Task					
9 Contractor					
10 Life Cycle Phase					
11 Source Document					
12 Report By					
13 LRE Date					
14 Inflation Index					
15 Total % Spent (ACWP/LRE)					
16 System Buy Quantity					
17 System First Unit	FirstUnit				
18 System Last Unit	LastUnit				
19 Resource					
20 2.0 PRODUCTION	Production				
21 2.01 NON-RECURRING PRODUCTION					
22 2.02 RECURRING PRODUCTION					
23 2.05 TRAINING					
24 2.14 OTHER PROCUREMENT					

Learning Analysis for Dataset Sheet1, Case 1
 Wednesday, 29 August 2012, 10:30 am

I. Model Form and Equation Table

Model Form:	Unweighted Learning Curve (Unit Theory)
Number of Observations Used:	3
Equation in Unit Space:	UNIT_COST =
Quantity Slope:	
Dependent Variable:	Production
Quantity Variable:	First Unit and Last Unit Variables

II. Fit Measures (in Fit Space)

Coefficient Statistics Summary

Variable	Coefficient	Std Dev of Coef	Beta Value	T-Statistic (Coef/Std)	P-Value	Prob Not Zero
Intercept						
CUM_QTY						

Goodness-of-Fit Statistics

Std Error (SE)	R-Squared	R-Squared (Adj)	Pearson's Corr Coef

- Coming in June 2013 data can be pushed directly into ACE sessions

Search Across Databases with JIAT

➤ Keyword Search Across Database Providers

- New feature to be implemented Sep 2013
- Search for key element data in all JIAT database sources
- Search on common content items
 - PNO, LIN, SRC, NIIN, NSN, Contract #
 - Example search for
 - MEP – 802A
 - LIN # G11966
- Search provides analyst with a list of database models that contain data for the item

- Search capability designed to help the analyst locate relevant data quickly
- Limits fruitless searches where no data is available for the item

The screenshot shows the JIAT - Joint Integrated Analysis Tool interface. The browser title is 'JIAT - Windows Internet Explorer'. The page content includes a navigation menu with items like 'Home Session', 'CER Libraries', 'Link Libraries', 'Documents Library', 'Multiple Run', 'Model Sequence', 'Manage Content', 'Maintenance', and 'Hel'. The main content area is titled 'New Session Wizard' and contains a section 'Create a New Session' with the instruction 'Please select a model and click Next or Finish (depending on model type)'. Below this is a table with two columns: 'Model Name' and 'Provider'.

Model Name	Provider
FLIS Unit Cost and Characteristics	FLIS Provider
Equipment Usage Factors	FORCES Provider
Consumable and Repairable Data by Major Command	OSMIS Provider
Consumable and Repairable Data by MDS	OSMIS Provider
Equipment Weight and Cube	FORCES Provider
Cargo Airlift Cost	FORCES Provider
Depot	OSMIS Provider
Fuel Usage	OSMIS Provider

At the bottom of the table, there are two buttons: 'Previous' and 'Finish'.



Sharing Models with JIAT

- **Make models available for conducting What-if drills**
 - Currently supported model types: Excel, ACE, SEER-SEM and Price-H
 - Analyst packages and uploads model to JIAT website
 - Packaging includes identify model inputs and outputs
 - Select publication location and identify user groups to view the model

LRU	Contract Price	Surcharge	Adjusted Cost	Credit Factor	1-Credit Factor	Cost Basis	Failure %	Cost per LRU
Processor	5295	1.237	6549.915	0.533	0.467	3058.81031	0.148	452.7039251

Warning: No validation is performed on the uploaded models. Please ensure that all inflation information is correct and that there are

Model Name: Cost per LRU Calculations for Repairables

Description: Lines Replaceable Units for Repairables

Phase: Pre-Development, Development, Production, Operations and Support, Disposal

Base Year: 2010

Inflation Table: Use Most Recent USG Table

Publish Status: Published

Model File Distribution: Allow users to download model file(s)

Current Model File: Cost per LRU Calculations for Repairables.xls

Model File (leave blank if not changed): Training Materials\JIAT 2.2 Training Materials\Cost per LRU Calculations for Repairables.xls

- Current Excel feature supports models without macros
- Macro Enabled Excel models can be added as new model types if desired



Working with Models in JIAT

- JIAT Users can run What-if drill in uploaded models
- User can create cases but cannot change or see underlying model method
- Common model runner interface used for all model types
- Run Total, Time Phased and Risk Results

Model (Non-Time Phased): Cost per LRU Calculations for Repairables
 Description: Lines Replaceable Units for Repairables
 Provider: Excel Provider (2.1.5)

VariableName	Appropriation	ModelUnits	ConvertFrom	Baseline	Alt 1
OUTPUT VARIABLES					
1 Cost per LRU	OPA			\$452.7039	\$472.4259
3 Cost Basis	OPA			\$3,058.8103	\$3,936.8824
4 Adjusted Cost	OPA			\$6,549.9150	\$8,430.1550
INPUT VARIABLES					
9 Contract Price	OPA			\$5,295.0000 *	6815
8 Surcharge				1.2370 *	1.2370 *
10 Credit Factor				0.5330 *	0.5330 *
11 Failure %		%		0.1480	

Model (Non-Time Phased): Training ACE Example
 Description: This is an ACE Example for JIAT Training
 Provider: ACE Provider (1.0)

VariableName	Appropriation	ModelUnits	ConvertFrom	Baseline	Alt 1
OUTPUT VARIABLES					
1 Total				\$109,238.6611	\$109,238.6611
3 Manufacturing				\$79,324.3912	\$79,324.3912
4 Air Vehicle	3010			\$68,977.7315	\$68,977.7315
5 Integration	3010			\$10,346.6597	\$10,346.6597
6 SEPM	3010			\$29,350.0248	\$29,350.0248
7 Other	3080			\$564.2452	\$564.2452
8 Air Vehicle Unit Cost	3010			\$9,853.9616	\$9,853.9616
INPUT VARIABLES					
10 Air Vehicle Buy Quantity		unt		7.0000 *	7.0000 *
				12000.0000 *	250.0000 *

Model (Time Phased): Training ACE Example
 Description: This is an ACE Example for JIAT Training
 Provider: ACE Provider (1.0)

VariableName	Appropriation	ModelUnits	ConvertFrom	Total	2006	2007	2008	2009	2010
OUTPUT VARIABLES									
1 Total				\$109,238.6611	\$15,652.7323	\$15,649.5849	\$31,161.8092	\$31,160.2896	\$15,614.2456
3 Manufacturing				\$79,324.3912	\$11,332.0599	\$11,332.0599	\$22,664.1118	\$22,664.1118	\$11,332.0599
4 Air Vehicle	3010			\$68,977.7315	\$9,853.9616	\$9,853.9616	\$19,707.9233	\$19,707.9233	\$9,853.9616
5 Integration	3010			\$10,346.6597	\$1,478.0942	\$1,478.0942	\$2,956.1885	\$2,956.1885	\$1,478.0942
6 SEPM	3010			\$29,350.0248	\$4,192.8607	\$4,192.8607	\$8,385.7214	\$8,385.7214	\$4,192.8607
7 Other	3080			\$564.2452	\$127.8158	\$124.6682	\$111.9761	\$110.4565	\$89.3285
8 Air Vehicle Unit Cost	3010			\$9,853.9616					
INPUT VARIABLES									
10 Air Vehicle Buy Quantity		unt		7.0000 *	1.0000 *	1.0000 *	2.0000 *	2.0000 *	1.0000 *
11 Air Vehicle Takeoff Weight (Ibs)		lb		12000.0000 *					
12 Air Vehicle Range (nmi)		nmi		250.0000 *					

- Coming in Sep 2013 models can be posted and downloaded from a document library



Conclusion

- JIAT enables the sharing of databases, libraries and models
- Various content types can be shared in the existing architecture
- ODASA-CE is leading by example and sharing their main databases and over 725 documented CERs
- All JIAT data is shared securely and accessed via CAC permission level user accounts
- Organizations can utilize the current framework to allow their analysts to publish and share their data resources
 - To add content to JIAT contact the JIAT Team
- The JIAT open and common framework architecture allows for additional content expansion with minimal investment

JIAT provides the framework to share your data

➤ ODASA-CE JIAT Project Manager

- Niatika Griffin – niatika.a.griffin.civ@mail.mil

➤ Tecolote JIAT Team

- JIAT Project Director – Melissa Cyrulik, mcyrulik@tecolote.com
- JIAT Technical Support – jiat_support@tecolote.com

Creating a JIAT Account

Visit <https://www.awps.army.mil/> to request a JIAT account

- Select “New User Request” and complete the form
- Once the account is approved, return to the AWPS site and follow the portal to JIAT

Welcome to the US Army web application environment. Authorized users will have access to web based applications used to manage Maintenance, Logistics, Budgeting, and Workload and Performance for several US Army, National Guard, and Army Reserve activities.

Only UNCLASSIFIED use of this system is allowed.

QA Testing Environment

eAWPS User ID:

Password:

PKI Issuer: DOD CA-15
 PKI Subject: USER.JOE.0123456789
 Valid From: 4/22/2008
 Valid Until: 8/19/2008 11:59:59 PM

[Forgot your password?](#)

Powered By **AKO** ARMY AUTHENTICATION ONLINE

Instructions: AKO CAC access to eAWPS is available only after you register your **AKO account** with your **eAWPS account** and your AKO account has your **CAC** registered to it. To initiate this registration please login normally then click the "Account Information" link for more instructions.

If Error Occurs: When AKO Authentication fails, you may receive a white Error page with message. If this occurs please try again later. If you are having consistent failures using this AKO CAC Login option, please contact the [eAWPS Helpdesk](#).

Access to this web environment requires that you always use the same [PKI Certificate](#) that is registered to your eAWPS account. If the above PKI Certificate is different from the one you previously registered with eAWPS please [click here for more instructions](#).

If you need assistance please contact the [eAWPS Helpdesk](#).

JIAT Database Providers

- JIAT provides access to multiple DoD databases



ACDB

Retrieve Program Cost, Schedule, and Technical Data

- Search and Retrieve mapped and normalized data



DCARC CSDR-SR Contract Submission Plans

Understand CSDR-SR data availability

- Provides CSDR-SR Plans listed by MDAP



AMCOS

Collect Standard Rates

- Enlisted, Officer, Civilian, National Guard and Reserve
- 15 tables of MOS level rates provided



FLIS

Retrieve NIIN or NSN data

- NIIN price and characteristics



Capabilities Knowledge Base

Identify Analogous Systems

- Capabilities, Programmatic, Technical, and Schedule data
- SAR Data



FORCES

Obtain Force and Organizational Data

- Flying costs, Cost per mile, Facilities costs, Equip data and costs, Replenishment costs, and Mileage
- More than 60 tables provided



DAMIR

Gather MDAP and MAIS Data

- MDAP and MAIS program cost and funding data, schedule data, and earned value data



Government Rates

- Military Composite Rates published by Office of the Under Secretary of Defense (Comptroller)
- OMB Discount Rates published by the Office of Management and Budget (OMB)



OSMIS

Gather O&S Data

- Vehicle operations Support systems, Aircraft flight, and Software Maintenance data