

# The OMB Federal IT Dashboard: Overview and Potential Application for IT Cost and Schedule Analysis

Daniel Harper

IT DASHBOARD

MITRE

For Internal MITRE Use

## Did you know....

| 2 |

- ...that there is a public available database of over 7000 federal IT investments including 800 classified by OMB as “major,” includes DoD and civilian programs?
- ...that this data is available for downloaded and analysis at no charge, without some much as providing an e-mail address?
- ...that this data includes useful analogies for the program you are estimating?
- ...that this data has the potential for generating useful cost/schedule factors and CER's?

© 2014 The MITRE Corporation. All rights reserved.

MITRE

| 3 |

## Background-IT Dashboard

- The IT Dashboard is a web portal enabling the general public to view details about federal (DoD as well as Civil) information technology investments.
- The mission of the IT Dashboard is to provide information on the effectiveness of government IT programs and to support decisions regarding the investment and management of resources.
- [OMB IT Dashboard \(https://www.itdashboard.gov/\)](https://www.itdashboard.gov/)
- [FAQ and Help https://www.itdashboard.gov/faq](https://www.itdashboard.gov/faq)
- [View a video summary here](#)
  - “Cost referred to over a dozen times

© 2014 The MITRE Corporation. All rights reserved. MITRE

| 4 |

## Click Below For Video Demonstration



The screenshot shows the OMB IT Dashboard website. At the top, there are navigation tabs: HOME, PORTFOLIO, COOP, DATA FEEDS, and FAQ. The main content area features a large bar chart titled 'FEDERAL IT PORTFOLIO' with a y-axis labeled '(\$ BIL)'. Below the chart, there is a 'Welcome to the IT Dashboard' section with introductory text and a 'Mobile Access' section with a smartphone icon. At the bottom, there are four quick links: 'WELCOME TO THE IT DASHBOARD', 'COOP', 'DATA FEEDS', and 'FAQ & SUPPORT'. The MITRE logo is visible in the bottom right corner.

© 2014 The MITRE Corporation. All rights reserved. MITRE

## Strengths and Weaknesses of the IT Dashboard

| 5 |

### Strengths:

- Data is publicly available and downloadable to Excel
- Data updated monthly
- 7000 federal IT investments including 800 classified by OMB as “major,” includes DoD and civilian programs
- \$600 Billion in Federal IT Investments over the last decade

### Weaknesses/challenges:

- Data is fairly high-level
- Not reported in a standardized format, i.e., inconsistent cost elements
- Data comes directly from the program office Exhibit 53/Exhibit 300 (budget perspective versus true “cost” perspective)
- [Inaccurate/incomplete records](#) (though improving according to GAO)
  - Anecdotally, dashboard data matched actual earned value reports for the DHS program I am estimating

© 2014 The MITRE Corporation. All rights reserved.

MITRE

## Ideas For Further Research

| 6 |

- Over the past few years I’ve had a number of ideas related to the IT Dashboard for possible additional research
- Unfortunately, like most of you, I’ve had a lack of time and resources to pursue
- The rest of the presentation will present a number of ideas as well as examples where the IT Dashboard has proved useful



© 2014 The MITRE Corporation. All rights reserved.

MITRE

| 7 |

**Idea #1: Can the IT Dashboard tell me how costs-to-date for the program I'm estimating compares historically to other programs in my agency?**

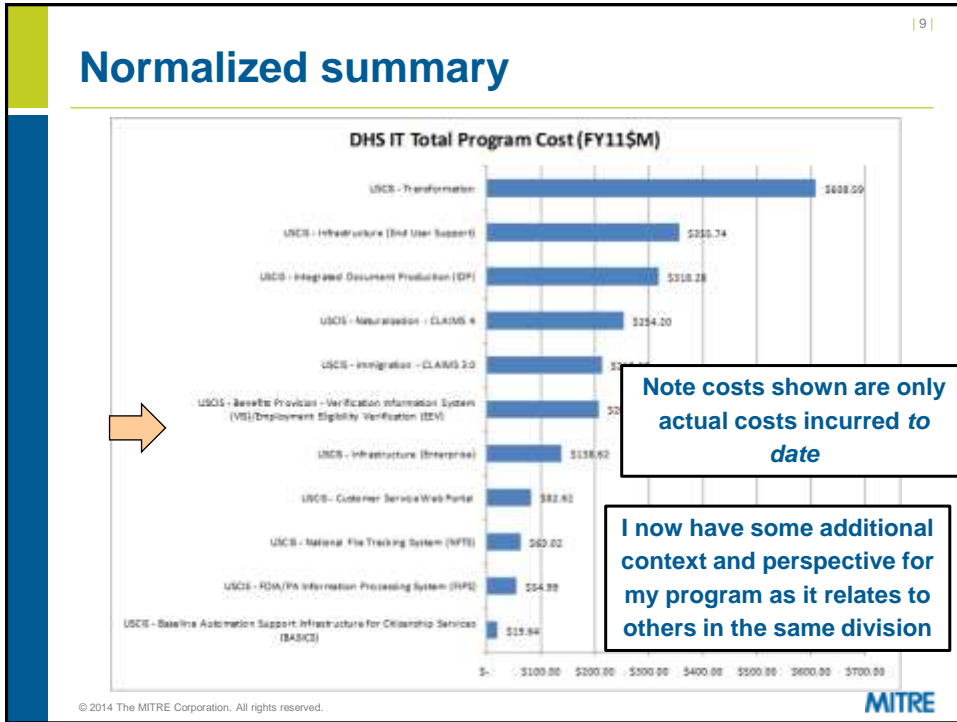
© 2014 The MITRE Corporation. All rights reserved. **MITRE**

| 8 |

## 11 ongoing DHS programs

Title	Agency	FEA Standard Segment	FEA Primary Function	Overall Rating	Total FY2014 Spending
USCIS - Baseline Automation Support Infrastructure for Citizenship Services (EASICS) (2012)	Department of Homeland Security	IT Management	Information and Technology Management	3.7	\$14.5M
USCIS - Benefits Provision - Verification Information System (VIS)/Employment Eligibility Verification (EEV) (2012)	Department of Homeland Security	IT Management	Workforce Management	3.0	\$29.0M
USCIS - Customer Service Web Portal (2012)	Department of Homeland Security	-	Public Affairs	3.0	\$1.6M
USCIS - FOIA/PA Information Processing System (FIPS) (2012)	Department of Homeland Security	IT Management	Information and Technology Management	3.8	\$4.3M
USCIS - Immigration - CLAIMS 3.0 (2012)	Department of Homeland Security	IT Management	Homeland Security	3.1	\$14.3M
USCIS - Infrastructure (End User Support) (2012)	Department of Homeland Security	-	Information and Technology Management	3.0	\$8.5M
USCIS - Infrastructure (Enterprise) (2012)	Department of Homeland Security	-	Information and Technology Management	3.8	\$63.9M
USCIS - Integrated Document Production (IDP) (2012)	Department of Homeland Security	IT Management	Homeland Security	4.1	\$48.2M
USCIS - National File Tracking System (NFTS) (2012)	Department of Homeland Security	IT Management	Information and Technology Management	3.0	\$4.8M
USCIS - Numerization - CLAIMS 4 (2012)	Department of Homeland Security	IT Management	Homeland Security	3.0	\$14.3M
USCIS - Transformation (2012)	Department of Homeland Security	IT Management	Homeland Security	2.3	\$34.9M

© 2014 The MITRE Corporation. All rights reserved. **MITRE**



| 10 |

**Idea #2: What level of cost-related details are available for the program I'm working on?**

© 2014 The MITRE Corporation. All rights reserved. MITRE



| 12 |

## Raw cost data

- USCIS - Customer Service Web Portal

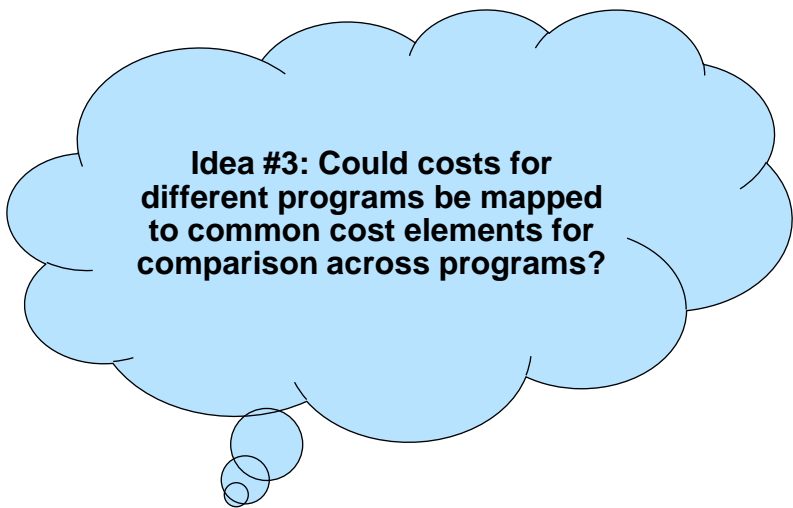
Milestone ID	Description of Milestones	Planned Start Date	Actual Start Date	Completion Date	Planned		Actual		Last Complete Date	Unique Identifier	Business Case ID	Agency ID	Agency Name
					Total Costs (\$ million)	Total Costs (\$ million)	Completion %	Actual %					
9103	Site Planning & Design	9/15/2005	9/15/2005	10/30/2005	0.797	0.797	100	100	9/17/2010	024-35-01-	326	24	Department
9104	Acquisition of Content Subscription &	9/15/2005	9/15/2005	10/30/2005	0.282	0.282	100	100	9/17/2010	024-35-01-	326	24	Department
9105	CRIS Design and Upgrade planning	10/1/2005	10/1/2005	9/30/2005	0.136	0.136	100	100	9/17/2010	024-35-01-	326	24	Department
9106	E-Fling Planning	10/1/2005	10/1/2005	9/30/2005	1.44	1.44	100	100	9/17/2010	024-35-01-	326	24	Department
9107	CRIS Software	10/1/2005	10/1/2005	9/30/2005	0.394	0.394	100	100	9/17/2010	024-35-01-	326	24	Department
9108	E-Fling Software	10/1/2005	10/1/2005	9/30/2005	0.94	0.94	100	100	9/17/2010	024-35-01-	326	24	Department
9109	Implementation of Contract Managers	9/30/2005	9/30/2005	9/30/2005	2.95	2.95	100	100	9/17/2010	024-35-01-	326	24	Department
9110	Migration of Content Site to NewTran	9/30/2005	9/30/2005	9/30/2005	0.5	0.5	100	100	9/17/2010	024-35-01-	326	24	Department
9111	Acquisition of BEA Software	9/30/2005	9/30/2005	7/15/2005	0.175	0.175	100	100	9/17/2010	024-35-01-	326	24	Department
9112	Acquisition of Fast DataSearch	9/30/2005	9/30/2005	7/15/2005	0.285	0.285	100	100	9/17/2010	024-35-01-	326	24	Department
9113	Preparation for Phase II	9/30/2005	9/30/2005	11/30/2005	0.79	0.79	100	100	9/17/2010	024-35-01-	326	24	Department
9114	CSWP Program - Legacy Site O&M	9/30/2005	9/30/2005	11/30/2005	2.785	2.785	100	100	9/17/2010	024-35-01-	326	24	Department
9115	CSWP Program - Planning and Acquis	10/1/2005	10/1/2005	9/30/2005	2.87	2.785	100	100	9/17/2010	024-35-01-	326	24	Department
9116	FY06 O&M of legacy web site	10/1/2005	10/1/2005	9/30/2005	3.125	3.125	100	100	9/17/2010	024-35-01-	326	24	Department
9117	FY07 Planning and Acquis	10/1/2005	10/1/2005	9/30/2007	0.5	0.5	100	100	9/17/2010	024-35-01-	326	24	Department
9118	FY07 O&M of legacy web site	10/1/2005	10/1/2005	9/30/2007	6.85	6.85	100	100	9/17/2010	024-35-01-	326	24	Department
9119	FY08 Planning and Acquis	10/1/2007	10/1/2007	9/30/2008	6.027	6.027	100	100	9/17/2010	024-35-01-	326	24	Department
9120	FY08 O&M	10/1/2007	10/1/2007	9/30/2008	7.101	7.101	100	100	9/17/2010	024-35-01-	326	24	Department

Notice we get a brief description of milestones

Total actual cost of the task

Actual start and completion date of the task

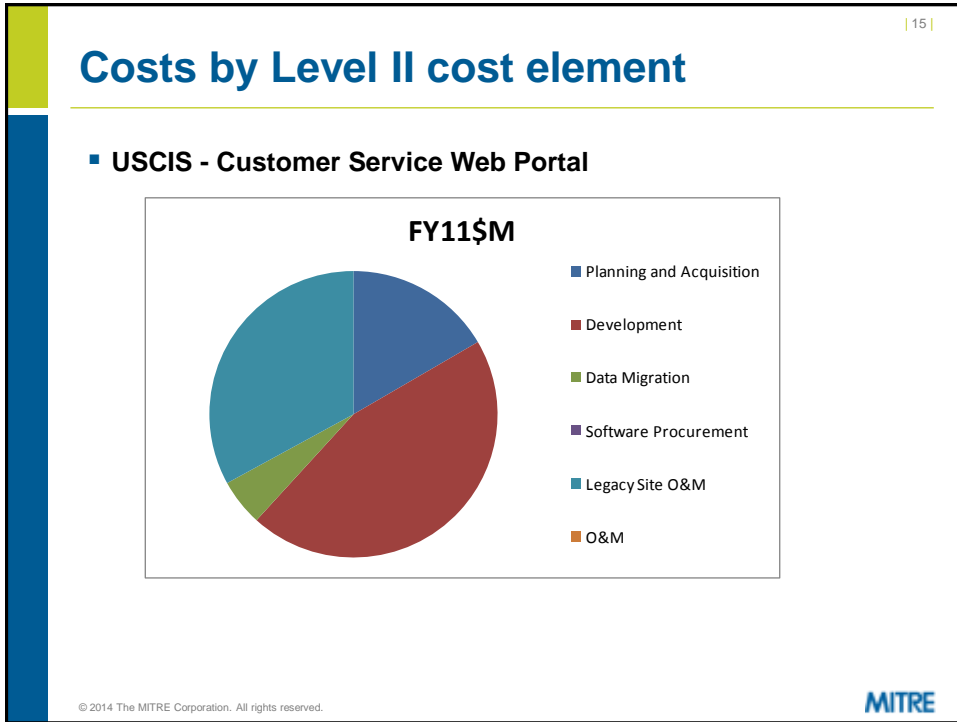
© 2014 The MITRE Corporation. All rights reserved. MITRE



## “Normalized” Data

### ■ USCIS - Customer Service Web Portal

						FY05	FY06	FY07	FY08	FY09	FY10	FY11		
Summary Page						Pay Inflation:	0.840006	0.878153	0.897355	0.925853	0.961101	0.984758		
						Non-pay Inflation:	0.872936	0.906354	0.928135	0.955524	0.962571	0.983528		
						FY11ISM								
Milestone ID	Description of Milestones	Actual Start Date	Actual Completion	actual duration	Planned Total Costs(in \$)	Actual Total Costs(in \$)	FY05	FY06	FY07	FY08	FY09	FY10	FY11	FY11SM Total
<b>Common cost elements</b>														
9103	Planning and Acquisition						\$ 7.55	\$ 9.47	\$ 6.51					
9104	Site Planning & Design	9/18/2006					\$ 0.91							
9105	Acquisition of Content Subscription & Practice Test	9/18/2006					\$ 0.33							
9106	CRIS Design and Upgrade planning	10/1/2005					16							
9106	E-Filing Planning	10/1/2005					70							
9114	CSWP Program: Legacy Site O&M (FY06)	9/30/2005						\$ 3.16						
9115	CSWP Program: Planning and Acquisition (FY05)	10/1/2005	9/30/2006		11.0	\$ 2.67	\$ 2.77		\$ 3.16					
9117	FY07 Planning and Acquisition	10/1/2006	9/30/2007		11.0	\$ 8.50	\$ 8.50			\$ 9.47				
9119	FY08 Planning and Acquisition	10/1/2007	9/30/2008		11.0	\$ 6.03	\$ 6.03				\$ 6.51			
							\$ 5.05	\$ 0.90						
9107	Development	10/1/2005	9/30/2006		11.0	\$ 0.39	\$ 0.39	\$ 0.46						
9108	CRIS Software	10/1/2005	9/30/2006		11.0	\$ 0.94	\$ 0.94	\$ 1.11						
9109	E-Filing Software	9/30/2005	9/30/2006		12.0	\$ 2.95	\$ 3.47							
9109	Implementation of Contract Management	9/30/2005	9/30/2006		14.0	\$ 0.79	\$ 0.79	\$ 0.90						
9113	Preplanning for Phase II	9/30/2005	11/30/2006											
							\$ 0.59							
9110	Data Migration	9/30/2005	9/30/2006		12.0	\$ 0.50	\$ 0.50	\$ 0.59						
							\$ 0.53				\$ 2.23			
9111	Software Procurement	9/30/2005	7/15/2006		10.0	\$ 0.18	\$ 0.18	\$ 0.20						
9112	Acquisition of DEA Software	9/30/2005	7/15/2006		10.0	\$ 0.29	\$ 0.29	\$ 0.33						
9124	Acquisition of Fast Database	10/1/2009	9/30/2010		11.0	\$ 2.04	\$ 2.15				\$ 2.23			
							\$ 3.68	\$ 7.82						
9116	FY06 O&M of legacy web site	10/1/2005	9/30/2006		11.0	\$ 3.13	\$ 3.13	\$ 3.68						
9118	FY07 O&M of legacy web site	10/1/2006	9/30/2007		11.0	\$ 6.85	\$ 6.85	\$ 7.82						



| 16 |

**Idea #4: are analogies available  
for program similar to my own?  
(For example, data center  
consolidation, estimating  
helpdesk costs)**

© 2014 The MITRE Corporation. All rights reserved. MITRE



| 17 |

## Data can be exported for analysis

---

- **Click IT Dashboard icon to go to the Data Feed page**
- **Cost schedule contract another programmatic data can be downloaded into Excel or any other application**



You may download this file now in CSV or XML format and/or subscribe to this feed via ATOM.

 ATOM
  CSV
  XML

© 2014 The MITRE Corporation. All rights reserved.




| 18 |

## Data Sources Available

---

Exhibit 53A	An overview of each Exhibit 53 submission
Exhibit 53C	An overview of each agencies' Cloud Computing Portfolio.
Exhibit 53 Funding Sources	Funding source information includes Total IT Spending for the PY, CY and BY, and a breakdown of DME and O&M costs.
Activities	Activity data includes cost, schedule and variance information
Investment Baseline History	Provides a history of investment rebaselines, replans and corrections.
CIO Evaluation History	Provides a history of the evaluation by CIO ratings and comments.
Contracts	Overview of contract information including information matched with USAspending.gov
Exhibit 300A	Exhibit 300A submission information, as well as Evaluation (by Agency CIO) information, and dates of last change to activities, contracts, and performance metrics.
Investment Trends	Provides a history of investment CIO Evaluations over time, as well as legacy investment ratings and variances
Performance Metrics	Overview of an investment's operational performance in regards to "Results-Specific" and "Activities or Technology-Specific" metrics
Performance Metric Actuals	Overview of the actual results of an investment's performance metrics in comparison to their targets
Projects	Project data includes cost, schedule and variance information
Life Cycle Costs	Life Cycle Cost information broken down into planning costs, DME, O&M, and Government FTE costs.
Technical Solutions Requirements	Indicates whether an investment in whole or in part specifically addresses various technical solution requirements
Technical Solutions Requirements URLs	Provides a list of URLs which correspond to the technical solution requirements
Investments Eliminated or Reduced	An agency-provided list of investments that will result in the elimination or reduction of other investments.
Investment Related URLs Bureau	Provides URLs related to the investment and indicates how they are related
Agency	Provides a list of Agencies based on the <a href="#">OMB Circular A-11 Appendix C</a>

© 2014 Agency



| 19 |

## Federal Enterprise Architecture Categories

- **Systems are all classified in the IT Dashboard according to their FEA Segment and Primary Function**
- **How do programs of like classifications compare to each other?**
- **According to Whitehouse.gov<sup>1</sup>:**
  - “The FEA Framework equips OMB and Federal agencies with a common language and framework to describe and analyze investments[...] The FEA consists of a set of interrelated “reference models” designed to facilitate crossagency analysis and the identification of duplicative investments, gaps and opportunities for collaboration within and across agencies. Collectively, the reference models comprise a framework for describing important elements of federal agency operations in a common and consistent way.”

FEA Reference Model Mapping Quick [Guide](#)

**MITRE**

© 2014 The MITRE Corporation. All rights reserved.

| 20 |

## Federal Enterprise Architecture Standard Segments:

- Segment: Segments are individual elements of the enterprise describing core mission areas, and common or shared business services and enterprise services.
  - Acquisition and Grant Management
  - Budget Formulation and Execution
  - Financial Management
  - Geospatial Services
  - Health: Health Care Administration
  - Health: Health Care Delivery Services
  - Health: Health Care Research and Practitioner Education
  - Health: Population Health Management and Consumer Safety
  - Human Resources Management
  - Identity Credential and Access Management
  - Information Management and Dissemination
  - Information Security
  - Information Sharing
  - IT Infrastructure
  - IT Management

Click [here](#) for an overview of the FEA

**For simplicity sake, let's just call these FEA Segments "categories".....**

**MITRE**

© 2014 The MITRE Corporation. All rights reserved.

| 21 |

## FEA Primary Functions

---

<ul style="list-style-type: none"> <li>■ Administrative Management</li> <li>■ Community and Social Services</li> <li>■ Controls and Oversight</li> <li>■ Defense and National Security</li> <li>■ Disaster Management</li> <li>■ Economic Development</li> <li>■ Education</li> <li>■ Energy</li> <li>■ Environmental Management</li> <li>■ Financial Management</li> <li>■ General Government</li> <li>■ General Science and Innovation</li> <li>■ Health</li> <li>■ Homeland Security</li> <li>■ Human Resource Management</li> <li>■ Income Security</li> </ul>	<ul style="list-style-type: none"> <li>■ Information and Technology Management</li> <li>■ Intelligence Operations</li> <li>■ Internal Risk Management and Mitigation</li> <li>■ International Affairs and Commerce</li> <li>■ Law Enforcement</li> <li>■ Litigation and Judicial Activities</li> <li>■ Natural Resources</li> <li>■ Public Works</li> <li>■ Regulatory Development</li> <li>■ Revenue Collection</li> <li>■ Security Management</li> <li>■ Supply Chain Management</li> <li>■ Transportation</li> <li>■ Workforce Management</li> </ul>
--	---

....And we'll call these "subcategories"

© 2014 The MITRE Corporation. All rights reserved. **MITRE**

| 22 |

## Comparison of my program to “like” programs

---

- **The DHS Verification Information System (VIS) is assigned to the *IT Management* FEA Segment, with The Primary Function being *Workforce Management***
- **There are 24 programs in the *IT Management* FEA Segment (21 of which are within DHS)**
- **There are a total of 9 programs on the IT dashboard classified as *Workforce Management***

© 2014 The MITRE Corporation. All rights reserved. **MITRE**

| 23 |

## Comparison of *Workforce Management* programs

- **VIS shows up as the highest cost-to-date program**
  - Keep in mind that all of these programs are active (vs. complete) and in various stages of acquisition or maintenance, so we cannot conclude that VIS is the most “expensive”
  - With that caveat in mind, could the next two high cost programs be potential programs to study for best practices?

Program Name	Total Cost (\$M)
USCIS - Benefits Provision - Verification Information System	\$306.99
ETA - Job Corps Student Pay Allotment Management Information	\$106.10
WHD - Wage Determination System (WDS)	\$74.35
MSHA - MSHA Standardized Information System (MSIS)	\$63.70
OSHA - Information System (OIS)	\$52.17
ETA - Foreign Labor Certification Systems (FLCS)	\$39.03
DIMS - Electronic Labor Organization Reporting System (e.LORS)	\$25.20
ETA - DOL eGrants	\$18.95
DFCEP - Federal Contractor Compliance System	\$0.14

Note costs shown are only actual costs incurred *to date*. All costs are *Constant Year 11*\$M

| 24 |

**Idea #5: Could the IT Dashboard be used for benchmarking?**

© 2014 The MITRE Corporation. All rights reserved.


**MITRE**

## ETA - Job Corps Student Pay Allotment Management Information System (SPAMIS) | 25 |

---

- Overall rating Green (8.4/10.0)
- Program description: About 103,000 young Job Corps students (citizens) benefit from the Student Pay Allotment Management Information System which provides data processing services that support academic and vocational training resulting in good paying jobs for graduates.
- Investment phase: operations & maintenance
- Contract Info: Time and Materials, Altech Services
- Investment start date: October 1, 2001
- Spending around \$9 million a year for maintenance

Go to IT Dashboard




© 2014 The MITRE Corporation. All rights reserved.

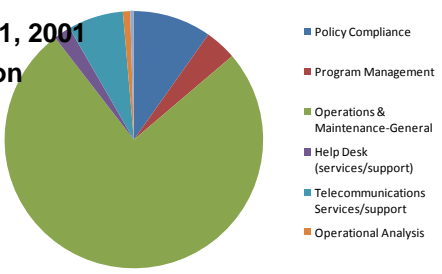
## WHD - Wage Determination System (WDS) | 26 |

---

- Overall rating Green (10.0/10.0)
- Program description The WDS is a major application within WHD that supports two legislative acts: the Davis Bacon and related Acts (DBRA) and the McNamara-O'Hara Service Contract Act (SCA), in the mission to achieve and promote compliance with labor standards.
- Investment phase: operations & maintenance
- Contract info: Time & Materials
- Investment start date: October 1, 2001
- Spending around \$12-\$18 million a year for maintenance

Go to IT Dashboard






Category	Color
Policy Compliance	Blue
Program Management	Red
Operations & Maintenance-General	Green
Help Desk (services/support)	Purple
Telecommunications Services/support	Teal
Operational Analysis	Orange

© 2014 The MITRE Corporation. All rights reserved.

| 27 |

**Idea #6: What level of detail is available my own program?  
(potentially useful while waiting for clearance or contract to start)**



**MITRE**

© 2014 The MITRE Corporation. All rights reserved.

| 28 |

## Example: what can be found out about my own program?

USCIS - Benefits Provision - Verification Information System (VIS)/Employment Eligibility Verification (EEV) (2012)

Cost Details | Schedule Details | Performance Metrics | Contracts | Reports

### Overall Rating



**5.0**

1 Baseline events

Show Calculators

### Investment Information

Agency Head: Janet A. Rappolino  
Agency: Department of Homeland Security Bureau: Citizenship and Immigration Services



Richard Speer  
Agency COO

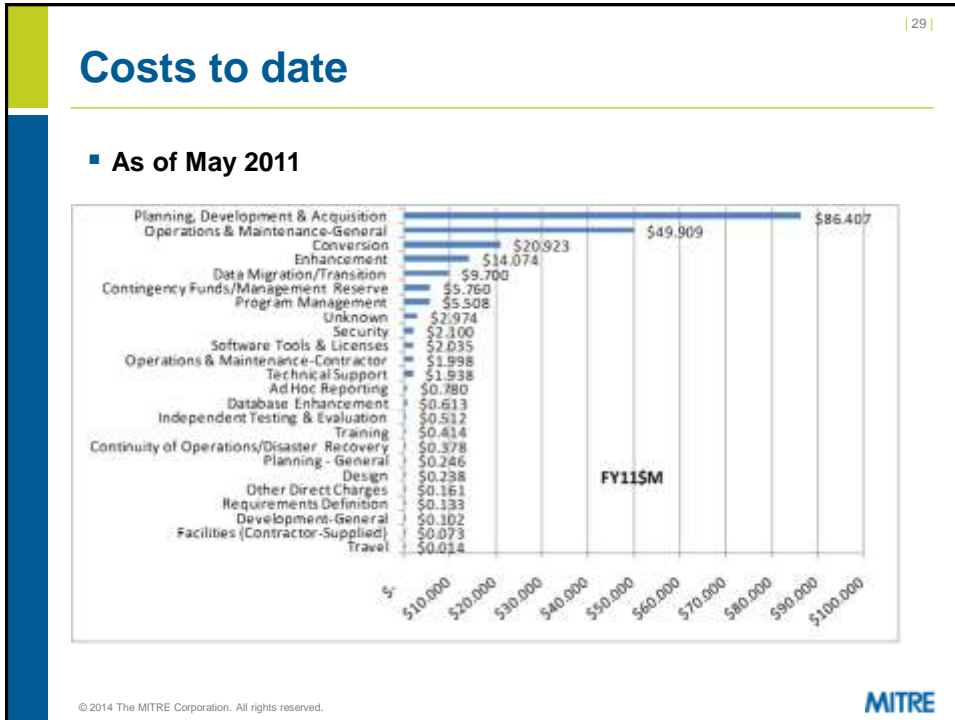
Investment Phase: Mixed Life Cycle  
Description: VIS supports E-Verify by enabling employers to electronically verify that newly hired more...

FY2011 Spending: \$28.0 M  
Investment End Date: 09/09/2017  
Status: Continuing

Cost:  Date of last reported change to any milestones: December 25, 2016

Schedule:  Date of last reported change to any milestones: December 23, 2016

Evaluation (By Agency COO):  3 out of 5  
Date last reported: December 25, 2016



| 30 |

## The Take Away

- The federal IT dashboard provides a wealth of useful historical cost information for major Government IT investments.
- This publicly available information can provide program managers to inform cost and schedule estimates.

© 2014 The MITRE Corporation. All rights reserved. MITRE

## Additional Resources

- [TechStat Toolkit](#)
- [OMB IT Dashboard](#)
- [Presidential Memorandum - September 10, 2010](#)
- [PerformanceStat](#)
- [OMB IT Reform 22DEC2010](#)
- [Vivek Kundra speaks to the 25 Point Plan](#)
- [GAO-11-318SP: Opportunities to Reduce Potential Duplication in Government Programs, Save Tax Dollars, and Enhance Revenue \(Dashboard discussed on p. 235\)](#)
- [OMB's 25 Point Implementation Plan to Reform Federal Information Technology Management](#)
- [Reports & Testimonies](#)[Legal Decisions](#)[Comptroller General](#)[Topic Collections](#)[Careers](#)[FraudNet/Reporting](#)[Fraud](#)[Multimedia](#).
- [Information Technology: OMB Has Made Improvements to Its Dashboard, but Further Work Is Needed by Agencies and OMB to Ensure Data Accuracy \(March 15, 2011\)](#)