

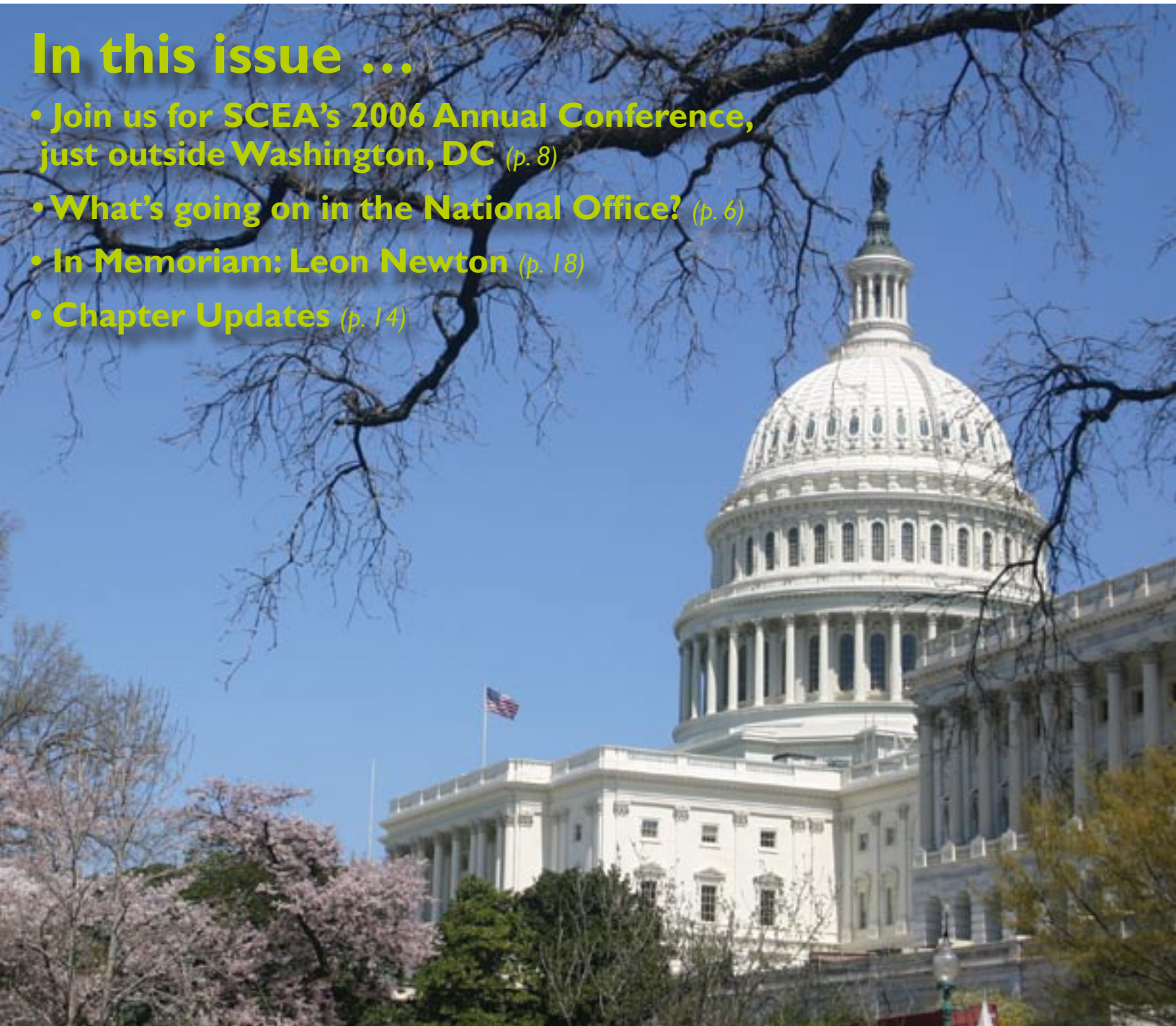
NATIONAL Estimator

The Society of Cost Estimating and Analysis

Spring 2006

In this issue ...

- Join us for SCEA's 2006 Annual Conference, just outside Washington, DC (p. 8)
- What's going on in the National Office? (p. 6)
- In Memoriam: Leon Newton (p. 18)
- Chapter Updates (p. 14)



New Technology for Cost Estimating

Using Non-proprietary Non-licensed Non-restrictive Software

We are pleased to offer a new way to do parametric cost estimating. Our FlexCosting system is an integrated hardware and software machine to handle medium and large scale estimates. Some of the features include:

- SQL database access with a variety of paths: Internet with encryption, company wide intranet, localized office/department nets, or non-networked laptops. Additional security levels with account/passwords and roles keeps your data base yours.
- Parametric nirvana with the analyst's toolbox containing a rich set of mathematical operators and functions, data points represented with either simple name/value pairs or multi-dimensioned tables.
- FlexCosting supports the ACEIT formats either in native mode or mimicked as Excel spreadsheets. With a few mouse clicks, most FlexCosting models can be transformed into a file readable by ACEIT.
- Produces standard DOD/CEAC reports (Pam92/ Pam11). BCE/ ICE capable.
- No software to install and maintain on your computer. You access the FlexCosting system with a web browser. You use the system by pointing to the web address (local Intranet or Internet). There are no software CD's to install.
- FlexCosting models are not proprietary, not licensed, and not restricted. You may unload a model to a storage device (cd/floppy/disk) for viewing or editing by common editing tools (e.g., Word/ Notepad). Executing the model simply means reloading into the database with a few mouse clicks.
- Managers assign cost teams for concurrent development, without being constrained by geography or organizational structures. Since users are not licensed to FlexCosting software, who uses FlexCosting and where is your business.
- View who/what/when statistics with FlexCosting. Manage multiple cost projects and teams with one or multiple SQL database(s). Control access modes (viewonly, editonly, analyst). See how your system is being used.

As an integrated cost estimating solution, you can buy FlexCost on three models: desktop, laptop, and server. All models offer a nothing-to-install, nothing-to-register, plug-and-cost approach to parametric cost modeling. FlexDesktop contains a desktop tower computer, Monitor,

LAN network switch (for office sharing), Firewall, and fully configured FlexCosting software.

FlexLaptop uses a Dell wireless enabled laptop attached to a LAN switch. (Note that wireless/switch capability is only for user convenience — they are not integral to FlexCosting.)

Unique to FlexCosting, the cost analyst can easily build giant, macro level estimates where the building blocks are complete cost models. The SOS demo model, for example, references costs from 10 other complete models. Audit trail records easily tell the analyst where the numbers came from and when. Simple software bridges are available to grab data from non FlexCosting models (ACEIT, Excel based, or PICES). You can easily build your own data bridge. Finally, referenced data items can include values or documentation.

For a full taste of FlexCosting, we invite you to demo our web site. At <http://guest.flexcosting.com>, the database has a smattering of simple to moderate cost estimates. SOFTWARE is a complete implementation of the Cocomo estimating methodology while SSAT handles a Small Satellite estimate for FREIDA. As a guest, you can not only view, but develop an estimate. The adventuresome can even download a FlexCosting model and load as a native file into ACEIT. The web location <https://secure.flexcosting.com> has the same database as the guest area but uses security features. You would be assigned an account, password, and cookie. All Internet traffic is encrypted with https. Finally <http://sos.flexcosting.com> gets to the giant System-of-Systems area. Here a sample SOS for a spacecraft system is constructed using estimates (both values and documentation) from 10 other complete estimates. SOS type models can in fact be used in even higher levels of abstraction. Yet at any level, the analyst can quickly determine where the underlying data came from and when.

For questions and details, please contact us. We can quickly convert your parametric estimate with FlexCosting.

FlexCosting.com

P.O. 28

Denton, MD 21639

support@flexcosting.com





The Society of Cost Estimating and Analysis

101 South Whiting Street, Suite 201
Alexandria, Virginia 22304 U.S.A.
703.751.8069 • FAX 703.461.7328
E-mail: scea@sceaonline.net
www.sceaonline.net

National Officers

President

Daniel A. Nussbaum

Vice President

Peter Andrejev

Secretary

Mel Etheridge

Treasurer

B.J. White-Olson

Past President

Neil F. Albert

Directors

Steve Bagby

David Graham

Richard Hartley

William Haseltine

Robyn Kane

David C. Stamm

Regional Vice Presidents

Joe Dean—Region 1

Joe Wagner—Region 2

Lewis Fichter—Region 3

Kerri Schiemann—Region 4

Tom Wiederrecht—Region 5

Blaine Webber—Region 8

Director of Certification

Mitchell Robinson

Recertification

Robert B. Carlton

Director of Training

Peter Braxton

National Office

Leonard Cheshire
Elmer Clegg

The *National Estimator* is a publication of the Society of Cost Estimating & Analysis. Members of the Society receive copies as a benefit of membership. Subscriptions for non-members are on a yearly basis at a cost of \$30.00 per year.

Publication of materials is at the discretion of the Editor and Officers of the Society. Opinions expressed by contributors are not necessarily those of the Society of Cost Estimating & Analysis. The Society endorses no product or service, does not engage in any form of lobbying, and does not offer for sale any commercial product or service for a profit. All revenue received from the activities of the Society are used solely for the professional benefit of its members.

ISSN 1040-20

NATIONAL Estimator



NATIONAL Estimator

The Society of Cost Estimating and Analysis

A non-profit organization dedicated to improving cost estimating and analysis in government and industry and enhancing the professional competence and achievement of its members.

Table of Contents

President's Letter.....	4
Letter from the Editor	5
SCEA National Office Update.....	6
SCEA Annual Conference and Training Workshop	8
Registration Form	10
Current CCE /A Certification Holders.....	11
Chapter Updates	
Greater Alabama	14
Greater Dayton.....	14
St. Lois Gateway	16
Greater Florida.....	17
In Memoriam: Leon Newton	18
Southern Maryland	19
New England	20
Pikes Peak	21
Washington, DC, Metro.....	22

Advertise in the NATIONAL Estimator

and Hit Your Mark



National Estimator Covers

Inside Front Cover	Full Page.....	8.5 x 11.....	\$600
Inside Front Cover	Half Page (if available).....	4.25 x 11 or 5.5 x 8.5	\$500
Inside Back Cover	Full Page.....	8.5 x 11.....	\$600
Inside Back Cover	Half Page (if available).....	4.25 x 11 or 5.5 x 8.5	\$500
Outside Back Cover.....	Half Page	4.25 x 11 or 5.5 x 8.5	\$800

Interior Ad

Interior Page Ad	Full Page.....	8.5 x 11.....	\$500
Interior Page Ad	Half Page	4.25 x 11 or 5.5 x 8.5	\$400
Interior Page Ad	Quarter Page	2.15 x 11 or 4.25 x 5.5	\$300

Classified Ads

Text only (no logo)	\$1 per word
Text with full-color logo	\$1 per word + \$50
Also on to SCEA Web Site	add \$45
Web-only Classified	\$200 for 180 days



President's Letter

by *Daniel Nussbaum, SCEA President*

The last time I wrote, I announced with pleasure that **Lenny Cheshire** had taken over as SCEA's Executive Director. Now I can add that Lenny has brought **Elmer Clegg** on board to complete the office staff. Elmer has had a deep and successful IT-based business career, and he brings enthusiasm, energy, marketing knowledge and a resolute customer focus to our operations. Together, Lenny and Elmer, have done a wonderful job of building structure into our operations, currency and completeness into our databases, and courtesy and responsiveness into all the National Office's interactions. Now, when you call the office, seeking information about your chapter, your membership, a conference, certification, or anything else, the answer is available quickly and completely. My hat is off to this dynamic duo, and yours should be too. Feel free to contact either of them in the National Office if you need help with any SCEA issue.

Conferences of Interest

In the area of conferences, we again co-hosted, with NDIA and PMI, a very successful IPM conference in DC. I have said before, but it bears repeating, that the IPM conference focuses on program management, earned value, and other financial and programmatic control mechanisms. **Dave Graham**, one of our Board members, developed and ran a SCEA track that linked cost estimating and earned value management. Thanks to Dave for this effort.

The board reaffirmed that our June 2007 conference will be in New Orleans.

We are putting final touches for our National Conference in June in Washington, DC. **Mel Etheridge** is doing a wonderful job pulling it all together, and I am hoping to see each of you at the conference. We have excellent speakers lined up, including retired Lieutenant General **Ron Kadish**, who just finished a very important review of DoDs procurement process, and **Stan Soloway**, who heads the DC-based Professional Service Council.

Updates from the SCEA Board

CostProf

I want to report to you actions the Board has taken in two of the areas that I asked the membership about.

Our purpose is to support and strengthen three key elements of our program — CostPROF, Certification, and Continuing Education (CEUs) — so that we can continue to pursue our mission, which is “to improve cost estimating and analysis in government and industry and enhance the professional competence and achievements of its members”. The Board decided to stay with the CEU program without any changes, and the Board voted to invest in the next generation of CostPROF. In fact, our goal is to expand CostPROF as part of creating a Cost Estimating Body of Knowledge (CEBOK), a parallel to the well-known Program Management Body of Knowledge (PMBOK). **Peter Braxton** (Director of Training, peter.braxton@ngc.com) is the guy in charge, so please tell him your thoughts.

Check Out the Redesigned SCEA Web Site

I hope you noticed the fresher, more logical, more navigable, and more current look to our Web page (www.sceaonline.net). Thanks for this go to **Robyn Kane** and **Dave Stamm** on the Board for providing the thought leadership and for proposing how to make our Web site better. Thanks also go out to **Don Clarke** for his versatile Web-meistering and general IT smarts for making it happen.

Relationships with Other Associations

Another important action is our desire to support the professional cost estimating community by enhancing our already good relations with the International Society for Parametric Analysis (ISPA). Each professional society established a team of three members of their board to enhance communications between societies and to find ways to get closer in joint cooperative activities. SCEA's trio is **Neil Albert** (our past President), **Peter Andrejev** (our current Vice President), and **Bob Carlton** (SCEA Board and Director of Recertification). ISPA's trio is composed of **Hank Apgar**, **Dan Ferens**, and **Andy Prince**. The teams have already reported back the following three objectives, and we are moving to accomplish them: Commit to Joint Conferences for 2007 and beyond; Explore a joint ISPA–SCEA National Office; and Work to a joint ISPA–SCEA National Journal. I will keep you informed as we progress along this path, and I solicit your comments on this issue.

See you in Washington, DC.
Dan

Letter from the Editor

by Joe Wagner, National Estimator Editor



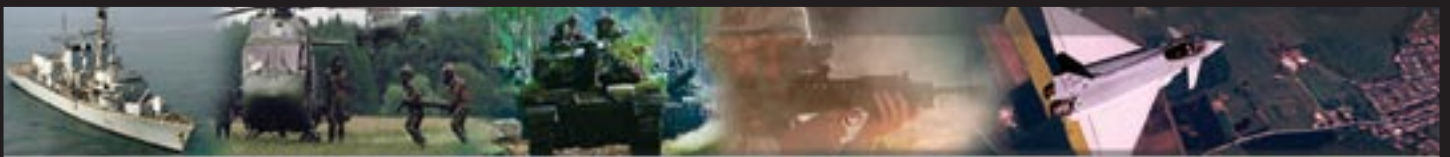
It's a typically busy period at the SCEA National Office right now, as preparations for the 2006 SCEA Conference in Washington, DC, go forward. The staff working our National Office in Alexandria, VA, has grown with the addition of **Elmer Clegg**, who joins **Lenny Cheshire** in managing the many responsibilities of member services. Elmer shares the job of running the office and supporting the membership with Lenny. Elmer is a retired IT/communications company manager and owner who cannot stop going out and getting things done. Originally from Massachusetts, he is a grad of Boston University, spent time in business overseas, both Europe and Japan, and has lived in Virginia for the past 30 years.

I also want to mention the very generous and impressive contributions of **Don Clark** to the national organization. Don is the computer wizard responsible for movement of the SCEA Web site and related database management into the 21st century. In his day-to-day life, he is an Operations Research Analyst employed by the Naval Center for Cost Analysis. He has spent many, many hours beyond that working for SCEA. Don is highly skilled in all aspects of computer hardware and software, including writing code. We are extremely fortunate to have him working on our IT tools.

My grateful thanks to all the chapter officers and activists who have submitted articles on their chapter activities for this issue. As I keep repeating, a primary purpose of this magazine is to show the members what the Society is about and what we accomplish. By sharing with each other, we can all generate some enthusiasm and get new ideas for service to our profession.

Holding a SCEA Conference in Washington always guarantees a good turnout and a full complement of professional papers for presentation. The chair for the 2006 SCEA Conference, **Mel Etheridge**, is bringing it together in his usual professional, high-quality manner, and we look forward to seeing you all in Tyson's Corner, VA, come June.

Thanks,
Joe



Whole Life Costing For Defence 2006

July 12–13, 2006 · The Thistle Selfridge Hotel, London, UK

How are you addressing the costing challenges created by industry's move from the supplier of spares to the providers of availability and capability? It's a question that you and your peers have raised over the past weeks in the development of WLC for Defence 2006. And this year it is the over-riding theme for the conference.

For more information...

Contact the International Quality and Productivity Center at
www.iqpc.com • 800 652 2363 • enquire@iqpc.co.uk



SCEA National Office Operations

by Lenny Cheshire, SCEA Executive Secretary

Many changes have taken place in the National Office since the last issue of *The Estimator*, and one of the most important involves personnel matters. In December, SCEA discontinued employment of salaried staff members and now relies on “1099 support”, i.e., the use of contractor personnel, to run the office. As a result of this new management approach, **Whitley Jones** has left SCEA, and I shifted from being a salaried employee to a contractor working by the hour. In December, we had the good fortune to add the services of **Elmer Clegg**. Elmer and I share similar backgrounds and we run the office as a team. We are both retirees who decided to take a “retirement job” to fulfill the need to remain active. As retirees, we already have medical plans and other benefits, so our circumstances fit very nicely with SCEA’s objectives, and we feel we can contribute to the Society’s future.

Elmer is a great asset to this office. He is a skilled businessman, through both education and experience, and has managed businesses on both corporate and entrepreneurial levels. His business acumen has already been of great benefit. He is working closely with President of SCEA **Dan Nussbaum**, Vice President **Peter Andrejev**, and Director of Training **Peter Braxton** on issues related to possible corporate sponsorships of SCEA and adoption of SCEA certification as corporate goals. Elmer’s value is in negotiating and translating an agreement into a contractual arrangement.

There is plenty of activity at the National Office to keep us both busy. While Elmer and I are both concerned with all matters in the office, we each have gravitated towards certain areas of concentration. Elmer is focusing his efforts on SCEA business development, processes, issues, and relationships with other business entities. He is also handling the financial aspects of running the National Office.

I have spent a great deal of time improving the accuracy and currency of the membership database, resolving member issues, and providing information to Chapter Presidents. The certification database has also received a complete updating, and processes have been established to improve the flow of both membership and certification/recertification applications. A roster of currently certified cost estimators is included with this issue of *The Estimator*.

There has been an increased amount of communication with the membership over the past few months, both incoming and outgoing. Elmer and I are committed to responsive customer service to you, our members, and to helping SCEA grow its membership rolls. We welcome your calls and the opportunity to help you or point you to the appropriate resource.

Between Elmer and myself, the National Office is staffed four days a week, Monday through Thursday, normally from 8:00 AM to 4:30 PM.

Don Clarke provides the third element in the office mix — IT support. Don is working closely with two of our Directors, **Robyn Kane** and **Dave Stamm**, to re-structure the SCEA Web site and re-host all of our IT requirements in-house.

Membership Information

Periodically I provide Excel spreadsheets to the Officers, Directors, and Chapter Presidents, but most of our 1,200 active members never get a chance to see this

information. I thought it would be a good idea to include some of the information presented to the Board of Directors at their meeting in February. The membership database contains the names of anyone who has had some type of activity with SCEA since 1999, i.e., been a member, became certified, or achieved emeritus status. The following statistics were developed from the membership database as of February 1 and were presented to the Board.

Total No. of Database Files	1,834
No. of Certified Non-Member Files	118
No. of Member Files	1,716
No. of Annual Member Files	1,679
No. of Life Member Files	26
No. of Emeritus Members	11

Note that of the 1,679 annual members, only 1,200 or so are active (current on their dues). The National Office will provide a current membership listing to regional chapters at any time upon request.

Chapter Activities

Several of the regional chapters are pursuing very active programs to expand their membership base and prepare their members for certification. The Greater Alabama, Southern Maryland, Central Florida and Washington Metro Chapters are particularly noteworthy. Greater Alabama added 17 new members in one day and have sponsored some intensive training events. As a result, they have eight members who will take the certification exam on April 22. The Washington Metro Chapter has gained about 75 members since the first of the year. Much of this growth is attributable to Northrop Grumman (TASC) funding annual dues for most of their analysts. Northrop Grumman’s **Peter Braxton**, SCEA’s Director for Training, was the driving force behind this expansion. Washington Metro has also conducted important training sessions to help prepare their members for certification.

Certification and Recertification

Certification exams are scheduled for April 22, June 17, and November 9. The deadline for submitting applications for the April 22 exam has passed, so if you missed out, be sure to prepare and apply for the June 17 exam. May 8 is the tentative deadline for submitting applications to take the June 17 exam. Applications for recertification can be submitted at any time.

Upcoming Conferences

SCEA will hold its annual conference in the Washington, D.C., area at the Tyson’s Corner Sheraton Premiere Hotel on June 13–16. There is no co-sponsor for this conference as there was last year. Registration can be made online at the SCEA Web site using credit cards, by mail to the National Office using checks or credit cards, or by fax or email using credit cards. We encourage online registrations whenever possible.

Some people who wish to register may not already be SCEA members, and it would be to their advantage to become members to avail themselves of the lower registration fee. There are separate forms on the Web site for conference registration and membership application. Registration fees and membership dues go into different bank accounts, so it is necessary to process them separately.

There will also be an International Program Management (IPM) Conference, sponsored jointly by CPM, NDIA, and SCEA on November 13–16 at Alexandria’s Mark Center Hilton Hotel. This conference will be concerned largely with Earned Value Management (EVM).

“Several of the regional chapters are pursuing very active programs to expand their membership base and prepare their members for certification. The Greater Alabama, Southern Maryland, Central Florida and Washington Metro Chapters are particularly noteworthy.”



2006 SCEA Annual Con

COST ANALYSIS: VITAL TOOL IN TODAY'S COMPETITIVE ENVIRONMENT

Sheraton Premier Hotel • Tysons Corner • Vienna • VA
June 13–16, 2006

This year's Annual Conference and Training Workshop promises to be the best yet! We'll be in McLean, Virginia, just outside Washington, DC, at the Sheraton Premier at Tysons Corner Hotel, site of the 2001 conference. As with previous years, we will feature Professional Papers, Training Tracks, Keynote Speakers, and Panel Discussions covering the very latest techniques, accepted methods, the newest software and tools, and hot topics of interest throughout the profession.

LISTEN TO GREAT KEYNOTE SPEAKERS (INVITED)

- Hon. Ryan Henry, Principal Deputy Under Secretary of Defense for Policy
- Stan Z. Soloway, President, Professional Services Council (PSC)
- Lt. Gen. Ronald T. Kadish, USAF (Ret), Chairman, Assessment Panel of the Defense Acquisition Performance Assessment Project

PLAN NOW TO LEARN AND HAVE FUN!

We'll kick off on Tuesday morning, June 13 with the Basic and Advanced Training Tracks covering the proven techniques and methods in Cost Estimation, Earned Value Management, and Parametrics. Each subject area is covered in detail in 90-minute modules presented by acknowledged experts in the field and allows you to move back and forth between the Basic and Advanced Tracks and the professional papers.

Tuesday evening we will welcome everyone with a reception featuring heavy hors d'oeuvres. This is a great opportunity to mingle, network, and catch up with old and new friends and colleagues.

On Wednesday morning, we'll formally open the Conference with a Plenary Session and two of the Keynote Speakers in the Grand Ballroom. At the conclusion of these events, we'll continue with the Training Tracks and start our Professional Presentations in five tracks:

- | | |
|--------------------|--------------------------------|
| • Software | • Experience & Lessons Learned |
| • Methods & Models | • Management |
| • Risk | |

Thursday morning will open with our third Keynote Speaker and, schedule permitting, a panel discussion among leaders in the profession from the government and private industry. Following this forum, we'll continue with papers and training. Our Annual Awards Lunch is on Thursday, and we will present SCEA Awards for Cost Estimator of the Year and Service to the Society. We'll also present the Best Paper Awards in each track and overall for the Conference.



ference & Training Workshop

Friday morning will be all work — training and papers — but we'll wrap things up in the early afternoon with the SCEA Annual Membership Meeting.

The Conference is also an opportunity to become recognized in your profession through professional certification. SCEA will administer the Certified Cost Estimator / Analyst examination on Saturday morning (register separately) with a preparation session on Wednesday evening.

LEARN FROM THE EXPERTS

We already have almost 60 papers submitted and are still getting submissions. With this many papers, we will probably have to add a sixth track, expanding your choices even more!

CATCH-UP ON THE LATEST IN COST ESTIMATING TOOLS

One of the most important opportunities of a SCEA Conference is catching up on the very latest in the commercial sector at our exhibitor's booths. Our exhibitor list isn't final at this writing, but in the past has included such leading firms in cost estimation as Tecolote and MCR, and tool developers such as PRICE Systems and Galorath. The commercial tool developers will also be delivering papers discussing the very latest versions and applications of their wares.

ENJOY THE AMENITIES OF AND THE SHERATON Premeire

The Sheraton Premier is one of the best conference venues in the Washington, DC, metropolitan area. Located in suburban McLean, VA, at the intersection of the Dulles Toll Road and Virginia Rt. 7, it is convenient to both Washington Dulles and Regan National Airports. We will have a shuttle to the West Falls Church Metrorail station, so local attendees can use the Metro if they wish and out-of-towners can easily get into downtown without fighting Washington's infamous traffic. The hotel has agreed to hold a block of rooms at the prevailing Federal Government lodging rate, but these will go on a first-come-first served basis. Reserve early to be sure you'll get the Conference Rate.

SECURE YOUR SEAT AT WWW.SCEAONLINE.NET

You can register for the Conference on-line at sceaonline.net. Credit cards are accepted. Conference registration fees are \$675 for members of SCEA and/or ISPA, \$750 for non-members, and \$600 for groups of 10 or more (SCEA/ISPA members or not). Members of groups can register individually, but a company representative must contact the SCEA National Office (703.751.8069) to establish the group in advance.

DON'T MISS THE BEST CONFERENCE OF THE YEAR...

This year's conference will keep you at the leading edge of your profession through the very best in training, latest in professional papers, and newest tools. Don't miss it!



DON'T FORGET

To get the best price on your hotel, call the Sheraton Premeire at 703.448.1234 and ask for the SCEA-2006 Conference rate by Wednesday, 10 May 2006!





2006 SCEA Annual Conference & Training Workshop

COST ANALYSIS: VITAL TOOL IN TODAY'S COMPETITIVE ENVIRONMENT

Sheraton Premier Hotel • Tysons Corner • Vienna • VA

COMPLETE FORM OR SIGN-UP ONLINE AT WWW.SCEAONLINE.NET

First Name _____

Last Name _____

Company/Organization _____

Please circle one:

Government

Military

Non-Government

Address _____

City _____ State _____ Zip Code _____

Country _____

Home Phone _____ Bus. Phone _____

Email Address _____

REGISTRATION FEES

SCEA Member Cost*\$ 675

Non-SCEA Cost.....\$ 750

Group Member Cost**\$ 600

*For \$55, you can add a SCEA membership to your registration and enjoy the many benefits SCEA offers, including the discounted registration fee, which more than pays for the membership. Take this opportunity to add SCEA membership to your registration and SAVE! Contact the National Office at 703.751.8069 for more information.

**Group discounts for ten or more from the same organization are available upon request from the SCEA National Office for a fee of \$600 each attendee. To have your organization added to the group discount list you must call for particulars 703.751.8069 (or email conference@sceaonline.net).

Your company or organization must be listed in the Group Discount section to qualify for this discount. We highly encourage you to determine if your company or organization should be in this list before registering. After your organization has been added to the group discount list you may continue to register and receive the group discounted price.

PAYMENT

\$_____ Total amount paid

Payment Type (circle one) Credit Card Check (enclosed)

Name as it appears on card _____

CC # _____

Exp. Date _____

Signature _____

SIGN-UP ON LINE AT WWW.SCEAONLINET.NET OR COMPLETE THIS FORM AND MAIL OR FAX TO:

SCEA National Office • 101 South Whiting Street, Suite 201 • Alexandria, VA 22304
703.461.7328 • scea@sceaonline.net • www.sceaonline.net

Current CCE /A Certification Holders

Individuals whose CCE/A Certification is current. It includes those persons whose certification expired in 2005. This list is based on an extensive audit of the records in the National Office. If you have any questions about the data related to your certification or believe you should be on the list, contact the National Office at 703-751-8069 or e-mail to lenny@sceaonline.net



Abate, Christopher C.	2009	Boivin, Jr., Joseph J.	2009	Clague, Darren	2006	Dubelko, John J.	2007
Adkins Jr., Donald F.	2008	Born, Paul D.	2009	Clark, Roger K.	2007	Duke, Roderick B.	2006
Adler, Terry R.	2006	Boulware, Gary W.	2006	Clark, Steven W.	2008	Dunlavy, Thomas L.	2009
Albert, Neil	2011	Bourbina, Michael L.	2006	Clay, Michael C.	2006	Dunn, Jill L.	2008
Aldrich, Guenever	2010	Bracamonte, David A.	2007	Cline, Denise M.	2009	Eckelmeyer, Kirsten E.	2008
Aldrich, Richard W.	2010	Braxton, Peter J.	2005	Clish, Jeffrey T.	2010	Eddins, Barry J.	2007
Alexander, Areve B.	2009	Bredfeldt, John C.	2006	Colclough, Kyle J.	2007	Edwards, Erik S.	2007
Alverson, Mary C.	2006	Bridges, Alicia L.	2009	Cole, Clarence W.	2006	Elder, Jessica	2009
Amorese, Michelle	2009	Bromm, Frederick	2006	Collins, Joanne A.	2006	Engel, Mary A.	2006
Anderson, Timothy P.	2007	Brown, Thomas W.	2007	Conley, Robert J.	2007	Etheridge, Melvin	2011
Andrejev, Peter E.	2006	Brozyna, Michael	2010	Conner, Thomas G.	2008	Euziere, Carter M.	2009
Annunziano, Joseph C.	2008	Brunner, Kurt R.	2008	Conyers, Craig J.	2008	Ewalt, Scott D.	2009
Apgar, Henry	2008	Buchfeller, Glenn W.	2007	Cook, Cynthia R.	2007	Faris, Janine L.	2006
Armstrong, Nathalie F.	2010	Burton, Noel A.	2009	Cooke, H. Samuel	2006	Fasciani, John M.	2006
Arreola, Richard	2010	Button, Mark W.	2008	Coon, Xiaoqing (Cindy) R.	2008	Fife, Anthony W.	2007
Atlee, Ivry T., Jr.	2009	Byberg, Alicia	2010	Cooperman, Keith W.	2007	Fischer, John R.	2006
Austin, Heather R.	2008	Callaghan, Mary Alice	2007	Copeland, Michael S.	2006	Flett, Frank R.	2006
Baird, Darla K.	2009	Calvert, Jackson G.	2006	Corwin, Gerald	2007	Fok, Derek S.	2009
Baland, Richard R.	2006	Camarote, Brian	2007	Coulson, Robert W.	2009	Fox, Anthony W.	2006
Bard, Marya	2005	Camden, Terry	2008	Coutavas, Spiros D.	2008	Fox, Dennis W.	2007
Barclay, David W.	2008	Campbell, Richard A	2010	Cox, Andrew S.	2006	Fox, T. Bernard	2007
Barnum, Michael G.	2010	Cappitelli, Ian M.	2007	Craig, Robert J.	2006	Frager, Alvin M.	2006
Baseman, Leroy T.	2006	Carlson, Mary	2007	Crowell, Jimmie C.	2009	Fraider, Matthew F.	2008
Battle Richard S.	2006	Carlson, Mayue L.	2007	Dalton, Christopher	2010	Frank, Richard W.	2008
Bauer, Brian I.	2009	Carlton, Robert B.	2006	Daly, Bryan A.	2010	Fronefield, Valerie A.	2005
Bazzy, Richard S.	2006	Carnahan, Thomas M.	2007	Dao, Thuha N.	2008	Gabrielson, Eric C.	2008
Becker, Sheona	2009	Casserly, Charles E.	2008	Daugherty, Catherine	2010	Gallimore, Carl R.	2006
Beenhouwer, Philip E.	2010	Castro, Juan M.	2006	Davis, Jack M.	2006	Genest, Daniel C.	2009
Beltramo, Michael N.	2006	Cayer, Brett	2006	Davis, James s.	2008	Gilbert, John	2006
Benner, Dana M.	2008	Cenzano, Kellie M.	2008	Davis, Michael L.	2006	Gillam, Dale	2009
Bielecki, John V.	2008	Chapman, Donna L.	2009	Dean, Daniel L.	2009	Gilchrist, Damian	2010
Billah, Mostain D.	2006	Chiang, George S.	2006	DeBanto, Scott T.	2008	Gindele, Mark E.	2005
Bishop, Noel D.	2005	Chiles, Jeffrey J.	2009	Dempski, Dennis	2008	Giordanella, Theresa J.	2008
Black, Hollis M.	2007	Chiota, Angela	2009	DeReus, Darrin L.	2009	Godsy, Brian D.	2006
Blackmar, John C.	2006	Choudhry, Savita Rani	2010	Dhaliwal, Sher Singh	2006	Golem, Deanna J.	2008
Blake, Christopher J.	2007	Churchwell, R. Paul	2005	Diaz, Roberto	2006	Gorrie, Joseph W.	2008
Blansfield, Robert M.	2006	Cincotta, Kevin	2009	Dopita, Alois	2008	Graf, Wesley E.	2008
Boito, Michael A.	2007	Cintron, Edward R.	2007	Dressel, Diane M.	2011	Graham, David R.	2008

Graham, Scott H.	2006	Kimbrough, Anthony K.	2008	McNitt, Charles F.	2011	Peterson, David	2005
Grant, Clyne	2009	Klippert, Brian J.	2009	Miklitch, James L.	2007	Phillips, Richard A.	2009
Gravelly, Donna M.	2009	Koehler, Scott A.	2009	Milford, Alex	2006	Platten, Jeffrey	2009
Greenberg, Marc	2009	Koenig, Richard W.	2006	Milhorn, Kenneth L.	2009	Pledger, Guy M.	2008
Greiner, Michael A.	2007	Kolodziejczk, Matthias	2010	Miller, Edwin C.	2007	Plummer, William S.	2007
Griffiths, Richard C.	2008	Kopanos, Thomas J.	2008	Mitchell, Jeremy S.	2009	Poore, Dennis J.	2008
Grogan, Terry W.	2009	Korkemaz, Jean C.	2007	Mobley, Matthew S.	2010	Popp, Michael E.	2010
Groneck, Tim M.	2009	Kreppel, Robert N.	2008	Monaco, James V.	2010	Prince, Andy	2005
Gross, Stephen	2006	Krueger, David G.	2008	Moore, Gary W.	2008	Pry, Diana E.	2008
Gudzune, Donald	2006	Kuusisto, Ted J.	2008	Moore, Jeffrey J.	2005	Puckett, Joe L.	2010
Gupta, Shishu	2006	Landino, Joseph J.	2006	Moore, Jennifer E.	2008	Pulsinelli, Richard C.	2007
Haider, Amin	2009	Langston, Edward H.	2006	Morales, Nicholas D.	2008	Quadt, Michelle L.	2005
Halstead, Leon G.	2006	Larue, Heather	2009	Morón, Andres M.	2010	Quick, Steven L.	2008
Halverson, Chris	2009	Laubacher, Matthew	2009	Mosier, Andrew K.	2008	Raby, Greg A.	2009
Hamaker, Joseph W.	2006	Lawless, Grant W.	2008	Mourton, Steve M.	2008	Redmond, Gary W.	2006
Hamilton, James R.	2008	Lawrence, Tim	2006	Mukailova, Elmira K.	2007	Reese, Gayle Diane	2010
Harmon, Dustin W.	2008	Leaver, Craig	2009	Murphy, Marcella	2010	Reimel, Jr. Douglas D.	2006
Harper, Daniel J.	2007	Lee, David A.	2005	Mulczynski, Thomas A.	2006	Rentfro, Mitchell D.	2009
Harris, Dennis R.	2009	Lewis, Marc T.	2008	Muzzall, James	2006	Richardson, William H.	2006
Harrison, John H.	2009	Lewis, Stanley X.	2006	Myers, Glenn	2010	Riddle, Robert A.	2006
Hart, Geoffrey	2009	Long, John A.	2007	Myers, Stephen E.	2006	Rink, Michael J.	2010
Hartley, Richard	2010	Loper, Jennifer M.	2008	Newhart, Floyd E.	2010	Ritschel, Jonathan D.	2008
Hartmann, Amanda R.	2008	Lowther, Gene R.	2009	Newton, Leon Q.	2006	Robbins, Jane L.	2006
Haseltine, William F.	2010	Lubell, Paul D.	2006	Newton, Stephen A.	2007	Roberts, James E.	2006
Hawthorn, Laura K.	2006	Lucas, Brandon M.	2009	Nguyen, Phu Phuong	2011	Robinson, Mitchell S.	2007
Hayes, Herb W.	2009	Lucas, Charles E	2008	Noonan, Brendan M.	2007	Roit, Robert B.	2006
Hees, Jing Z.	2009	Lueker, William E.	2007	Noonan, Michael	2009	Rose, Marc	2009
Higdon, Michael	2010	Luke, Stephen R.	2005	North, Carolyn L.	2006	Rossmeisl, David F.	2007
Hoffman, Abram E.	2007	Lundy, Dale	2008	Nussbaum, Dan	2006	Rueve, Ryan J.	2007
Hoffstetter, Sharon A.	2009	Lymangrover, Robert A.	2009	Nystrom, Karen A.	2009	Rupp, Christopher R.	2007
Holbrook, Mark A.	2008	Lyons, Robert J.	2006	Oberle, Rita A.	2006	Ruwe, Joseph	2008
Houk, Stacy L.	2006	MacKenzie, Donald	2006	Odesser, David S.	2009	Sage, Brian D.	2010
Hughes, Danny R.	2009	Malik, Dennis	2008	Ogrodnik, Robert V.	2009	Salarvand, Tania	2010
Hunt, Kenneth I.	2006	Malkin, Kelly Ann	2009	Okamoto, Dara	2010	Salls, Wayne Lee	2006
Ipsaro, Michael J.	2009	Maltz, Ira B.	2007	Olsen, David G.	2006	Sanderford, Robert M.	2009
Ives, Mark	2006	Manchester, James E.	2006	Olson, Matthew	2006	Sanders, Thomas	2008
Jackson, Ross A.	2008	Marcantonio, Daniel	2006	Ono, Daryl K.	2008	Sanger, Roland W.	2005
Jain, Sumita	2006	Marcelliano, Daniel	2006	Orcutt, Laura L.	2006	Schenk, Ann	2008
Johnson, Bruce	2010	Markell, Alan G.	2009	O'Reilly, George A.	2006	Schluckbier, Daniel C.	2008
Johnson, Wayne, A.	2010	Marshall, Jonathan A.	2009	Osseck, Richard E.	2011	Schriever, Daniel R.	2009
Jones, Thomas L.	2006	Martin, Kyle R.	2009	Ostrowski, Paul	2007	Schulman, Adam B.	2009
Kain, Shawn M.	2009	Martinez, Alexandria	2010	Oyer, Darrell, J.	2006	Schwartz, Robert M.	2008
Kamp, Leo C.	2006	Mattingly, David Brian	2010	Pantaleo, John	2006	Seavers, Gregory B.	2007
Kane, Robyn A.	2006	McConnell, David	2010	Pariser, David B.	2008	Shea, Richard J.	2008
Kankey, Roland D.	2006	McKeel, Kevin M.	2007	Parisi, Joseph M.	2008	Sherrill, Randy M.	2006
Katz, Richard A.	2006	McKenzie, Donald	2006	Park, Steve A.	2007	Shiner, Heather	2009
Keiser, Frank T.	2006	McLain, Earl L.	2006	Parks, Reginald	2010	Shockley, William G.	2009
Kelly, Michael F.	2008	McLusky, Mark D.	2007	Parkey, Thomas J.	2006	Shrader, Bryan E.	2007
Kess, Michael	2009	McMains, Tim A.	2010	Peeler, David L.	2006	Shrum, Thomas C.	2008
Kiefer, Dale F.	2007	McMillian, Tina G.	2006	Peplow, Donald P.	2008	Sichenze, John A.	2006
Kihara, Molly M	2009	McNeil, Charles L.	2009	Pereira, Paul	2006	Sipple, Vincent P.	2007
Killingsworth, Paul S.	2009	McNeil, Hugh W.	2009	Pesola, Mark	2010	Smart, Christian B.	2009

Smith, Anthony L.	2007	Svehlak, Christopher S.	2010	Uttendorf, Kelvin R.	2010	Willenbucher, Timothy	2006
Smith, James R.	2009	Swanick, Gina	2006	Vickers, Scott M.	2007	Williams, Philip	2006
Smith, Joseph L., Jr	2010	Sylvester, Ann R.	2009	Villata, Emilio	2010	Williams, ThomasF.	2010
Smith, Leslie M.	2005	Takeoka, Robert	2005	Vincent, Andrew	2006	Willstatter, Kurt	2009
Smith, Scott W.	2009	Teal, John	2010	Vitkevich, John A.	2008	Wilson, Richard Vn.	2007
Smith, Todd	2010	Thackray, Anthony	2010	Walker, Ian L.	2008	Wilson, William T.	2006
Sonner, Paul D.	2008	Thompson, Bruce E.	2008	Ward, William N.	2007	Wiviott, Jeffrey M.	2005
Spinner, Paula C.	2008	Thompson, Charles W.	2007	Warden, William S.	2008	Wollover, David R.	2006
Spurlock, Martha	2008	Thompson, Dennis M.	2006	Washel, Scott M.	2008	Wright, Brian L.	2007
Stanley, Lisa M.	2008	Thompson, Janet F.	2007	Webster, Paul W.	2006	Young, Douglas W.	2006
Steimley, John F.	2009	Toner, James Mark	2007	Webster, Robert J.	2011	Young, R. Kenneth	2009
Steinbuchel, Maxmilian	2006	Tracht, Thomas	2007	Weeks, Ed D.	2008	Young, Robert W.	2005
Stone, Barbara A.	2011	Tracy, Kathleen J.	2009	Wentworth, Janet	2007	Younossi, Obaid	2008
Stouffer, Virginia	2009	Tracy, Steven P.	2010	Wheeler, Anita F.	2005	Zedaker, Patricia M.	2007
Strachan, James L.	2007	Turkelson, Jason D.	2009	White, Jeanne M.	2009	Zepka, James M.	2007
Suelzer, Michael	2009	Turner, Linda	2010	White, Jeffrey W.	2007	Ziemba, David	2007
Sullivan, John D.	2007	Tuttle, Christopher C.	2009	Wiederrecht, Thomas P.	2006	Zinser, Ernest J.	2006
Sullivan, John L.	2011	Ulferts, G.W.	2006	Wilke, Thomas	2008	Zitzmann, Charles C.	2007
Sundaram, Kannan	2009	Upshaw, Leah P.	2007	Wilkes, Christopher J.	2009	Zupcscan, Marjana	2009

CostPROF™ The perfect way to prepare for the CCE/A Certification Exam offered at the 2006 Annual SCEA Conference and Workshop!

Whether you are a seasoned analyst looking to refresh your skills to take the Certified Cost Estimator/Analyst examination or an intern, newly introduced to the field, CostPROF™ modules provide you with an all-inclusive collection of study materials that will help you attain your professional education goals.

Subject Matter Modules

Cost Estimating

basics of cost estimating, cost techniques, parametric

Cost Analysis Techniques

data collection
normalization, index

Analytical Methods

basic data analysis
principles, learning curve, regression analysis, cost risk analysis, probability

Specialized Costing

manufacturing cost estimating, software

Management Applications

economic analysis, contract pricing, earned value management, cost management

Chapter Updates

Greater Alabama Chapter News

The Greater Alabama Chapter hosted another cost-related seminar in November 2005. Dr. Steve Book provided very useful information on Parametric Analysis and CER Development.

The chapter is trying to grow the next generation of our profession. We have established a scholarship aimed at sophomores, juniors, and seniors enrolled at a local college, who has a declared major in business, engineering, mathematics, or operations research. Some other areas of interest, during the holidays we hosted a food drive and a toy drive for the local homeless or those less fortunate.

Beginning in February, the Greater Alabama Chapter is hosting our annual certification training. We offer this training for anyone who wishes to participate, whether it is for continuing education credits or the participant is considering taking the exam. We will proctor the exam on 22 April.

Greater Dayton Chapter News



A Note from President Jeremy Mitchell

Now that the holiday season has passed and the new year has arrived, it is time to start thinking about your professional development. Are you happy with where you are in your career? Have others passed you by? Are you getting the information and experiences that you need to keep up with the ever changing profession of cost estimating? The Greater Dayton Chapter of SCEA is dedicated to helping you with professional development in 2006.

The 13th Annual National Conference and Training Workshop will be held near Washington, D.C. This is the premier cost estimating event for all cost professionals and a great way to refine your estimating skills and develop yourself professionally. The conference will be held on 13–16 June, 2006, at the Sheraton Premier Hotel at Tysons Corner in Vienna, VA. This event is worth the training dollars and the time investment. I hope to see a great turnout from the Greater Dayton Chapter.

We are in the process of revamping our education program. In years past we have provided educational opportunities that focused on the basics. While this type of training will still be available on an as-needed basis, look for new education programs that focus more on the theory, rather than the mechanics, of what we do. It is important as cost estimators that we have a strong theoretical understanding of our costing concepts. I am looking forward to see the products and experience the new classes for myself. Our new Director of Education **Ross Jackson** will be leading this effort.

Finally, perhaps the best way to grow professionally is to become active in the local chapter. We have numerous opportunities, both immediate and for the next SCEA year. I encourage you to run for office in the next SCEA election or volunteer for a director position. This could be your opportunity to help shape the future of cost estimating in the Greater Dayton area. If you wish to run for office this Spring, keep your eye out for the nomination call in the next few months. If you wish to volunteer for a Director position, we currently have vacancies. Contact me 656.5500 or **Linda Turner** at 656.6114 if you would like more information.

A Happy Family

In December 2005, the Dayton Chapter provided a local family a wonderful and memorable Christmas. Due to the chapter members' generosity, the SCEA Charity Committee purchased, wrapped, and delivered over 50 gifts to this family of five. From clothes to toys and pots/pans, every need was taken care of with your donations. Truly amazing!

During this time of hardship for this family, a bright star appeared — and that was each of you who contributed dollars and gifts to this needy family. The family's reaction was heartwarming and touching. From the grand-

mother to the littlest child, they couldn't stop talking about all the gifts they received and what a wonderful gesture this was. The kids clamored about the toys and the mother was emotionally thrilled about the much-needed household items received.

This family is eternally grateful to SCEA for taking the time and donating the money to make a family of strangers happy during the holidays. SCEA also thanks you for your participation.

SCEA Networking Luncheons – More Coming Your Way!

In an effort to provide added opportunities for cost estimators, analysts, and educators to get together and discuss topics of the day, the Greater Dayton Chapter is hosting quarterly networking luncheons. The intent of the luncheons is to provide an informal setting where estimators and financial managers can get together with the Dayton SCEA Board Members. The networking discussions are a great way to improve communications across the entire FM community at Wright-Patterson.

The first lunch was held at Fuddruckers in Beavercreek in mid-November with around 25 attendees. Organizations represented included ASC Cost Staff, F-22, DAU, F-16, and the A-10.

The ASC Comptroller **Ms. McDermott** and the ASC Deputy Comptroller **Col Nocera** also attended, providing an excellent opportunity for some of the junior members of the cost estimating community to meet ASC's Financial Management leadership.

Welcome Ross Jackson, SCEA Greater Dayton Chapter Education Director

The Greater Dayton Chapter is pleased that **Ross Jackson** will serve as the Education Director for the 2005–2006 term. Ross is currently a Cost Analyst in the Aeronautical Systems Center, Acquisition Cost Division (ASC/FMCE). In addition to working as a cost analyst, he is the Economics Area Chair for the University of Phoenix, Cincinnati/Dayton campus. Ross has completed the coursework associated with a PhD in Applied Management and Decision Sciences through Walden University. He is currently working on his dissertation, "A Quantitative Analysis of Senior Leadership Tenures within the Department of the Air Force from 1947 to 2005". We look forward to working with Ross to enhance education opportunities for the Dayton Chapter. If there is a particular educational topic that you are interested in, please contact Ross Jackson at 656.5482.

ASC/FM Reservist of the Year

At the ASC/FM Fall Awards Banquet, **Ryan Rueve** won the honor of Reservist of the Year. Congratulations Ryan!



A good time is had by all the Dayton Chapter Networking Luncheon.

Chapter Updates

St. Louis Gateway Chapter News



Everyone had a great time at the Fall Seminar!

Fall Seminar

Our fall seminar in October 2005 was another spectacular event. We again had great attendance and as always, the Boeing Leadership Center was outstanding. Speakers included Dr. **Steve Parsons**, Risk Management; **Dave Lundy** – Cost Factors, **Larry Carney** on Business Case Analysis, Dr. **Ken Sperry** from Larry Carney on Business Case Analysis, Boeing Oklahoma – Life Cycle Costs; **Carol Hibbard** – UCLA training and **Sean Riggs**, Boeing – IDS Supplier Management Finance Director

Looking forward to the 2006 event in the fall.

Spring Event

We are going to sponsor **Michael Curran**, CEO and President of Decisions Science Corporation speaking on Value Based Risk Management on April 3, at the Boeing Executive Briefing Center. The session will follow with Networking Reception and refreshments.

CostProf

The local chapter, along with Boeing Estimating/SMFO Core, will sponsor the 8-week (16 session) CostProf course in Fall 2006 if there are enough registered participants. The Chapter sponsor certification testing one to two times a year, chaired by **Bill Lueker**

Involvement

If you would like to get involved with the Gateway Chapter, please do not hesitate to call **Susan Hatcher** (636.391.0787)

The Project Management Institute Risk SIG & Institute for International Research Present The Annual

Project Risk Symposium 2006

May 22 – May 25, 2006 • Hyatt Regency Downtown • Houston, Texas

Web: www.iirusa.com/projectrisk

SCEA MEMBERS: Get 15% off registration when you mention priority code XM1812SCEA

Greater Florida Chapter News

The current elected officers are as follows: President **Peggy Curry**; Vice President **Mike Euziere**; Treasurer **Joe Ruwe**; Secretary **Tina McMillian**; and Board of Directors Members **Jim Cook**, **Bill Shockley**, **Greg Seavers**, and **Val Thompson**.

Special Events

Officers Address ASMC

Chapter President **Peggy Curry** and Chapter Vice President **Mike Euziere** addressed the ASMC (American Society of Military Comp-trollers) at the Space Coast Chapter monthly meeting held Thursday, December 1, 2005, in Melbourne, FL. The presentation consisted on explaining the purpose and mission of SCEA, the certification process, and the benefits of membership. It was a prime opportunity to distribute copies of *The National Estimator* magazine, *The Journal of Cost Analysis and Management*, and various other SCEA promotional publications.

Holiday Social Event

Central Florida Chapter's Winter Holiday Dinner was held at Walt Disney World's Shades of Green Resort on Saturday, December 10, 2005. There was an excellent turn out for the event with nearly 20 members and guests present. A dinner buffet was offered, and our first annual Chinese Auction was held. You can see by the delightful pictures that the evening was very much enjoyed. Stay tuned as we plan on starting the 2006 holiday season with another trip to Shades of Green!

The Central Florida Chapter Sponsored Certification Training and Exam

Certification training began bright and early Saturday, October 8, 2005, at the Merritt Island Campus of Webster University with presentations on (1) Cost Estimating Overview and (2) Contract Types presented by CCE/A and Chapter Board Member **Bill Shockley**.

On Saturday, October 15, 2005, CCE/A and Chapter Board Member **Jim Cook**, presented Learning Curve Theory and CCE/A **Ken Milhorn** presented Linear Regression.

The training session scheduled for Saturday, October 22, 2005, had to be rescheduled to Saturday, Oct. 29, 2005, due to the potential approach of Hurricane Wilma. As a result, the final session consisted of three presentations: (1) Basic Financial Management Concepts, (2) Basic Concepts of Earned Value Management presented by CCE/A and Treasurer **Joe Ruwe**, and (3) Software Cost Estimating presented by CCE/A and Chapter Secretary **Tina McMillian**. The Certification Exam itself was held on Saturday, November 5, 2005, with two brave souls in attendance.

Many thanks to the instructors noted above, as well as to **Bill Shockley** for proctoring the exam and to **Mike Euziere** for acting as the point man for the documentation. The Florida Chapter boasts many members that go above and beyond to foster the mission of the Society and are dedicated to improving cost estimating and analysis in government and industry as well as enhancing the professional competence and achievement of its members.



Chapter Updates

The Central Florida Chapter also extends a sincere THANK YOU to Webster University, Merritt Island Campus, for the use of their facilities for the study sessions and exam. The technical capability and convenience of the start-of-the-art facility were greatly appreciated. The professionalism and courtesy shown by the staff is commendable, even though they couldn't stop the threat of the prospective hurricane!

Membership Meetings and Network Events

The 2006 General Membership Meeting Schedule has been established. Please note the dates and location. Meetings are held at 6:30 PM on the selected date. The Central Florida Chapter membership encompasses the entire State of Florida, and as such, meetings will alternate between Central Florida (Orlando) and the East Coast (Melbourne). Because of our geographic challenges, meetings are held in the evenings and combine dinner, topical presentation, and opportunities for networking.

The year got off to a great start. Our first meeting of 2006 was held in Melbourne at the popular eating establishment, Charlie and Jake's BBQ. Our guest speaker for the evening was **Mr. Lonnie Hill**, Contracts Manager, Northrop Grumman Corporation. The members were treated to a presentation on Weighted Guidelines, complete with detailed handouts, packed full of valuable information and reference locations plus a custom-developed Weighted Guidelines Tool graciously provided by Mr. Hill. Many THANKS, Lonnie for sharing your knowledge and expertise. Several in attendance made positive remarks about the Weighted Guidelines Tool and it's applicability to their current assignments.

For those interested in attending monthly meetings

Day	Date	City	Location (Tentative)	Address
Tuesday	Feb. 28	Melbourne	Charlie & Jake's BBQ	6300 N. Wickham Rd.
Wednesday	April 19	Orlando	Perkins Restaurant	11662 University Blvd.
Monday	June 26	Melbourne	Charlie & Jake's BBQ	6300 N. Wickham Rd.
Tuesday	August 8	Orlando	Perkins Restaurant	11662 University Blvd.
Wednesday	October 25	Melbourne	Charlie & Jake's BBQ	6300 N. Wickham Rd.

One of our Chapter's goals for this year is to continue to provide our membership with interesting and applicable meeting topics. Consequently, our next meeting will be held in Orlando on Wednesday, April 19, 2006, at 6:30 PM at the Perkins Restaurant on University Blvd.

For those interested in attending monthly meetings or other events or for those who would like information on the Florida Chapter, please contact SCEA Florida Chapter Secretary **Tina McMillian** at tmcmillian@mcricri.com, President **Peggy Curry** at Peggy.Curry@ngc.com, Vice President **Mike Euziere** at Mike.Euziere-1@nasa.gov, or Treasurer **Joe Ruwe** at ruwe@att.com.

In Memoriam: Leon Newton



The Central Florida Chapter lost a valuable member with the passing of Leon Newton on Saturday, November 5, 2005.

Leon was instrumental in standing up the Central Florida SCEA Chapter and served in many capacities on both a local and national level. He exemplified the mission of the organization by his dedication to promoting and enhancing the profession of cost estimating and analysis. He did much to encourage the professional growth of the society and its members.

Our sympathy goes out to Leon's family as he will be missed by all.

Southern Maryland Chapter News

President's Message

As our Chapter begins 2006, I'd like to take the time to reflect on some of our accomplishments in 2005. About nine months ago, Education and Training Chairman **Wes Graf** approached our Board with an idea — put on a training session that leads people to taking the Certified Cost Estimators Exam. At the kick-off session, almost 20 people expressed interest, and of those, ultimately nine people sat for the exam. This session was such a success that we plan to do it again as a tangible benefit to SCEA members. On the test, it seemed certain topics caused analysts greater difficulty than others, so the Southern Maryland Chapter will be offering lunchtime training sessions to cover some of these topics.

It would be great to see all Southern Maryland Chapter members achieve the CCE designation! For contractors, it's a tangible way to demonstrate to customers that you possess the necessary skills to provide quality cost support. For government employees, it's an opportunity to focus on cost estimating in addition to the DAWIA certification.

2006 Elected Officers

The Southern Maryland Chapter has elected the follow people to its Board of Directors:

- President — **Mike Popp**, currently functions as the NAVAIR 4.2 Subject Matter Expert for avionics and software cost estimating and has been involved in cost estimating for 25 years
- Vice President — **Mike Thompson**, Director of NAVAIR programs for MCR Federal with 27 years experience in cost estimating and EVM
- Treasurer — **Marcy Murphy**, currently is an Operations and Research Analyst for NAVAIR 4.2 and has 14 years of cost estimating, 5 years supporting NAVAIR
- Secretary — **Ken Thomson**, support for NAVAIR, through MCR Federal, for more than seven years, with more than 15 years cost estimating experience

SPEAKER LUNCHEON SERIES

Our January luncheon speakers, Mr. **Chris Beatty** (Missile Defense Agency) and Mr. **Paul Tetrault** (Mitre), provided a very informative presentation regarding schedule analysis implications in estimates. In February, our chapter hosted Mr. **Richard Hartley**, Deputy Assistant Secretary for Cost and Economics (Office of the Assistant Secretary of the Air Force for Financial Management and Comptroller), and learned about up-coming initiatives at AFCAA. Our March luncheon speaker was Mr. **Ian Brown** (Booz Allen Hamilton) who spoke on topics regarding function point analysis.



*We congratulate the Southern Maryland Chapter's most recent Certified Cost Estimator/Analysts (CCE/A)! From left to right: **Mike Popp**, **Brian Mattingly**, **Matt Mobley**, **Marcy Murphy**, **Matthias Kolodziejczyk**, and (not in photo) **Joseph Smith***



Don't see your chapter listed? Send your chapter's news to SCEA Headquarters at scea@sceaonline.net Let your chapter members know what you've been doing for them. Get connected with other chapter's members and SCEA members-at-large. Encourage networking and social interaction among fellow members.

New England Chapter News

The New England Chapter of SCEA has been quite busy the last 3 to 4 months. In November, we had our first luncheon of the season with Capt **Tom Brown** (AF Cost Analysis Agency) and **Alf Smith** (Tecolote Research, Inc.) presenting a briefing entitled “Working Toward and Air Force Cost Risk Analysis Handbook”. We had our annual Christmas social in December, which included a membership drive. In January, we were pleased to have **Ian Brown** from Booz Allen Hamilton present a very interesting briefing on “Software Cost Analysis Using Function Point Analysis”. Our March luncheon featured **Mike Gallo** from Technomics, Inc. presenting “Software Resources Data Reporting (SRDR): Initial Results and Future Challenges”.

Future Events

Looking ahead (but not far) we are preparing for our annual Mini-PDI on April 24 in Nashua, NH. The conference will feature keynote speaker **D. Michael Abrashoff** presenting “It’s Your Ship: Management Techniques from the Best Damn Ship in the Navy”. An outstanding lineup of speakers is confirmed, including **Rich Hartley** (SAF/FMC) and **Blaise Durante** (SAF/AQX). This event is jointly put on by the Yankee Chapter of ASMC and the New England Chapter of SCEA and is the highlight of the year for both chapters. A summer social ranging from whale watching to clam-

bakes to baseball at Fenway (We still haven’t decided!) is on the horizon.

Training for SCEA Certified Cost Estimator Exam

A major initiative our chapter has undertaken is a training program to prepare members for the SCEA Certified Cost Estimator Examination to be held in the April/May timeframe. **Mark Aimes** (Quantech Services, Inc.) and **Diane Butler** (MCR, LLC) are leading the effort and the bi-weekly training sessions have drawn 25 students per session.

Web Site

Look for the New England Chapter of SCEA Web site off the SCEA National Web site coming soon!

Board

The New England Chapter of SCEA Board Members making all of this happen are as follows:

- **Joe Puckett** (DAFC), President
- **Ben Maltz** (MCR LLC), Vice President
- **Ellie Bassett** (MCR LLC), Treasurer
- **Cari Pullen** (Tecolote Research, Inc.), Secretary
- **Capt Darrin DeReus** (USAF), Board Member
- **Mark Aimes** (Quantech Services, Inc.), Board Member
- **Diane Butler** (MCR LLC), Board Member
- **Paul Marston** (MCR LLC), Past President



*Seated from left to right: President **Joe Puckett**, Board Member **Mark Aimes**; Standing from left to right: Treasurer **Ellie Bassett**, Board Member **Capt. Darrin DeReus**, Secretary **Cari Pullen**, Vice President **Ben Maltz** (Not pictured: Board Member **Diane Butler** and Past President **Paul Marston**)*

Pike's Peak Chapter News

The Pikes Peak Chapter of SCEA has had an awesome year thus far. By far, the monthly luncheon speakers have provided the members with knowledge of a variety of subjects, both personal and professional, that have empowered them to do things they may not have thought of doing prior to receiving the information. Our members are great supporters of their local chapter.

After an enjoyable summer off from monthly luncheon meetings, our September Kick-Off Meeting was an evening presentation on personal financial planning, presented by Dr. **Andy Sherbo**, SAIC, who shared practical tools for building wealth and entertained questions at the close of the evening. Spouses were able to join us at Dr. Sherbo's presentation, making it a pleasant evening to learn about financial planning that affects the family.

In October, Lt Col **Neal Rappaport**, USAF Academy, did an excellent job educating us about the economic reform starting in Iraq. His command of the subject matter coupled with his knowledge of history and geography made this an excellent session!

The November luncheon was facilitated by **Chris Dalton**, Mitre, who shared with us his ideas for using Microsoft Project to conduct risk analysis. While the software is not typically one chosen by cost analysts to conduct risk, it provides another means of cross-checking traditional risk analysis.

Our traditional venue for December is a holiday celebration at Phantom Canyon, a landmark Colorado Springs brew pub. The chapter hosts a social in order to network with one another in a less formal atmosphere than the monthly luncheons. It is always fun and this year we saw increased participation and a lively time.

In January, Dr. **Roy Smoker**, MCR, Inc., presented a thoughtful piece he had prepared for the 2005 SCEA Conference. Using technology maturity throughout a program's life cycle, he was able to develop a methodology for accounting for cost growth. The luncheon participants were especially fascinated with the approach and skeptical that any program would be purchased if the true costs were depicted.

February's luncheon speaker was a local person, Mr. **Tom Wiederrecht**, AF Space Command, who spoke to us on using Linear Programming. The topic, as Tom pointed out, has great application for business decisions and instances where one is attempting to maximize a decision for product implementation, cost savings or any number of maximizing problems.

On March 23, **Frank Spinner** brought us an update to the world of criminal justice and its impact on the cost of military justice. Frank proved to be an engaging speaker last year and this briefing was of interest to spouses or other interested parties as well.

Our bank balance continues to grow, and we are at the point of trying to analyze a good way to use part of the funds, whether for a scholarship benefiting a student pursuing cost studies or a worthy cause in the Colorado Springs area. Revenues have been generated mainly through the luncheons, but other avenues of increasing the bank balance are currently being explored.

Elections occur this year for the new two-year term for a new Board of Directors.



(Top) President Paula Spinner, Tecolote Research, Inc., and October's luncheon speaker Lt Col **Neal Rappaport**, USAF Academy.
(Bottom) President Paula Spinner and February's luncheon speaker Mr. **Tom Wiederrecht**, AF Space Command.

Washington DC Metro Chapter News

Last fall, the Washington DC Metro Chapter held local elections and inducted a new leadership Board for the next two years. I want to extend a hearty thanks to **Bill Stranges** for his leadership in developing our Web site and providing chapter luncheons with inviting information and discussion within the cost community. We look forward to serving in our new capacities by bringing the more discussion to monthly luncheons that highlight current advances in cost estimating and analysis, providing semi-annual training opportunities and certification examination, and supporting the National Office for the annual conference this summer. The 2005–2007 Washington DC Metro board is:

President	Dan Schluckebier	Northrop Grumman IT
Vice President	Debra Lehman	MCR Federal
Treasurer	Dave Stem	RAND
Secretary	Jeanne White	SAIC
Membership Chair	Jeff Moore	Booz Allen Hamilton
Program Chair	Geoffrey Hart	IMSolutions, LLC
Past President	Bill Stranges	Naval Air Systems Command

We also recognize the following chapter members who volunteered their time to support our activities. **Geoffrey Hart** provides our IT/Web development and maintenance. He continues to develop our Web site (www.washingtonsce.com) to meet the needs of our membership. Visit our site and let us know how we can continue to improve. **Peter Braxton** has been our point man in kicking off CostPROF training this March to prepare for the certification exam in April. **Mel Etheridge** has provided advice and encouragement for the upcoming annual conference. Thank you for your time and direction.

The 2006 luncheon schedule was kicked off by Ms. **Denna Ohwewwo** and Mr. **Brian Alford** of Booz Allen Hamilton. Their topic, “An Approach to Probabilistic Modeling for Mixed Data Types with Missing Values,” identified a data modeling technique to get meaningful results from quality, but incomplete survey data. If you missed the luncheon and are interested in this topic, review the presentation on our Web site, which also includes other recent monthly luncheon presentations. Take a look!

Cost estimating and analysis continues to be at the center of decision-makers reviews. In the recent Quadrennial Defense Review, the words “cost” and “performance” were used 26 times. The “schedule” leg of the pyramid was only invoked twice; however, we all know the importance of timing to completion of a system. We will present informative topics and invite you to participate in improving cost estimating and analysis in the organizations we support. We also want to enhance the professional competence and achievements of our members. Your feedback is important in identifying topics that will stimulate discussions and advances in cost estimating and analysis.



*Washington DC Metro Chapter Officers for 2005–2007: **Dan Schluckebier**, **Debra Lehman**, **Dave Stem**, **Jeff Moore**, and **Jeanne White**. (Not shown, **Geoffrey Hart** and **Bill Stranges**).*



a clear vision for your future

At Booz Allen Hamilton, we offer challenging assignments, engaging colleagues, unmatched opportunities for growth and achievement, and the satisfaction that comes from helping our clients succeed.

See yourself at Booz Allen. We seek:

Cost Analysts

You'll provide specialized expertise and insight to key DoD and national security clients regarding investment techniques and evaluations of their strategic programs. Use your tactical skills to perform variance and risk analysis, total cost of ownership studies, decision modeling analysis, and estimates on major systems acquisition programs. Qualified candidates should have 5–10 years of experience in cost estimating for DoD weapon programs or key national security programs. A CCE/A designation is a plus. We have immediate opportunities in Washington, DC; San Diego, CA; Dayton, OH; Norfolk, VA; and San Antonio, TX.

Booz Allen Hamilton, a global strategy and technology consulting firm, works with clients to deliver results that endure.

Applicants selected will be subject to a security investigation and must meet eligibility requirements for access to classified information.

To submit your resume, go to www.boozallen.com and create your personal skills and experience profile. Be sure to include your e-mail address. Booz Allen is proud of our diverse work environment, EOE, M/F/D/V.



Booz | Allen | Hamilton
90 years delivering results that endure

2006 SCEA Annual Conference & Training Workshop

COST ANALYSIS: VITAL TOOL IN TODAY'S COMPETITIVE ENVIRONMENT

Sheraton Premier Hotel • Tysons Corner • Vienna • VA • June 13–16, 2006

**Showcase your company's products, services and people —
Exhibit or sponsor conference amenities at SCEA-2006**

EXHIBIT

Exhibit booths are still available at this well-attended event, and foot traffic promises to be heavy. Booths will be located in the Junior Ballroom, where refreshment breaks are held. Double your impact and sponsor the refreshment break too!

SPONSOR

- Conference materials bag
- Printing of proceedings
- Production of Conference CD
- Small portfolio folder for each participant
- Events — Welcome Reception, Refreshment Breaks, Lunches, and many more!



FOR MORE INFORMATION, CONTACT

**ELMER CLEGG AT ELMER@SCEAONLINE.NET
OR 703.751.8069**



The Society of Cost Estimating and Analysis

SCEA National Office
101 South Whiting Street, Suite 201
Alexandria, VA 22304
703.751.8063
scea@sceaonline.net
www.sceaonline.net

NATIONAL Estimator

In this Issue ...

Join us for SCEA's 2006 Annual Conference
and 25th anniversary of Washington, DC
• What's going on in the National Office?
• In Memoriam: Louis H. H. H.
• Chapter updates



PSRST STD
US POSTAGE PAID
WOODBIDGE, VA
PERMIT # 286